

# Looking at data

- 10 years of data from the Danish Experiments Inspectorate

Danish  
3R-Center **R R R** Replacement  
Reduction  
Refinement

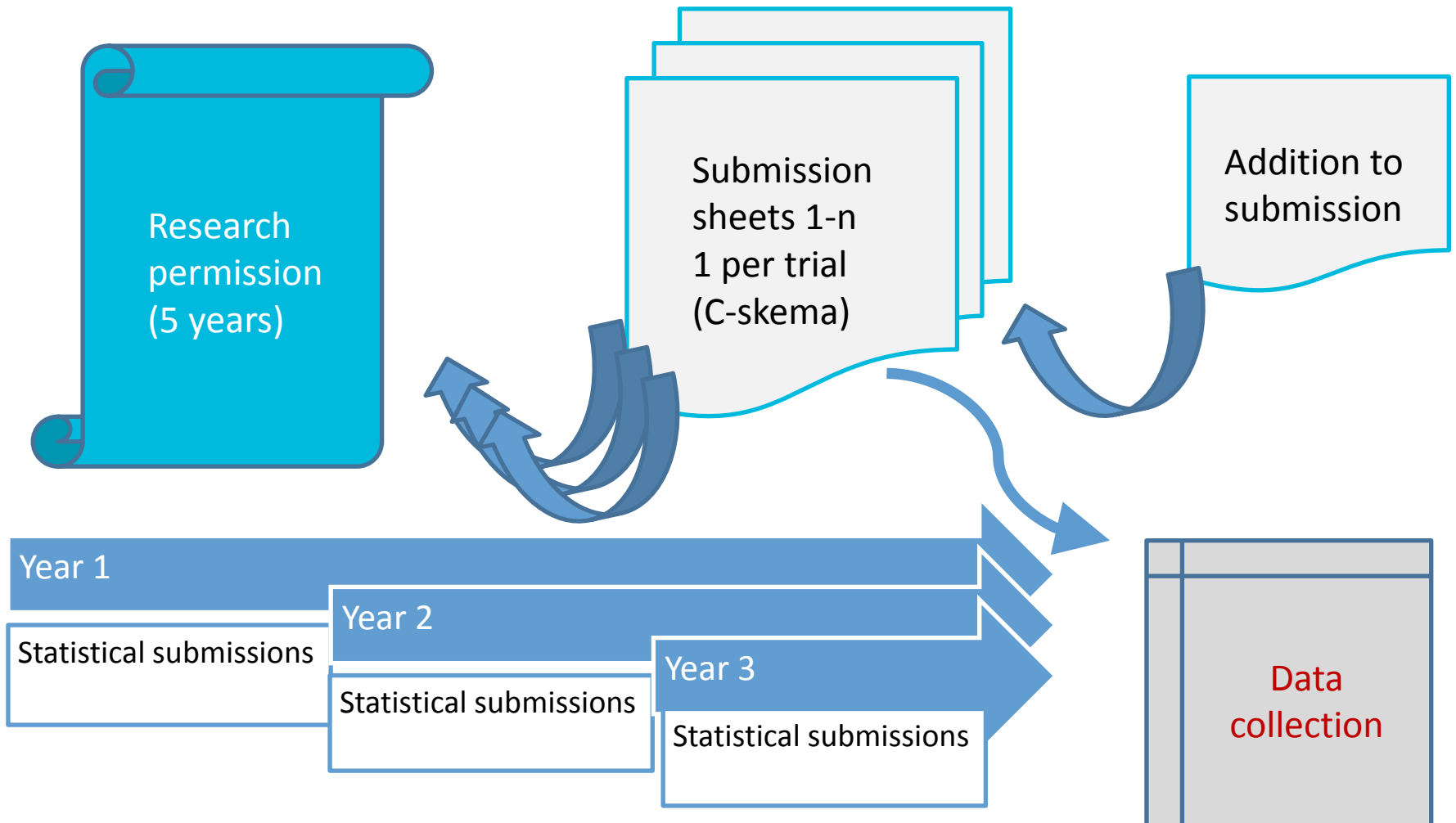
- Accumulation of annual submissions to the Danish Experiments Inspectorate 2002-2013
- Development of experimental animal use over time



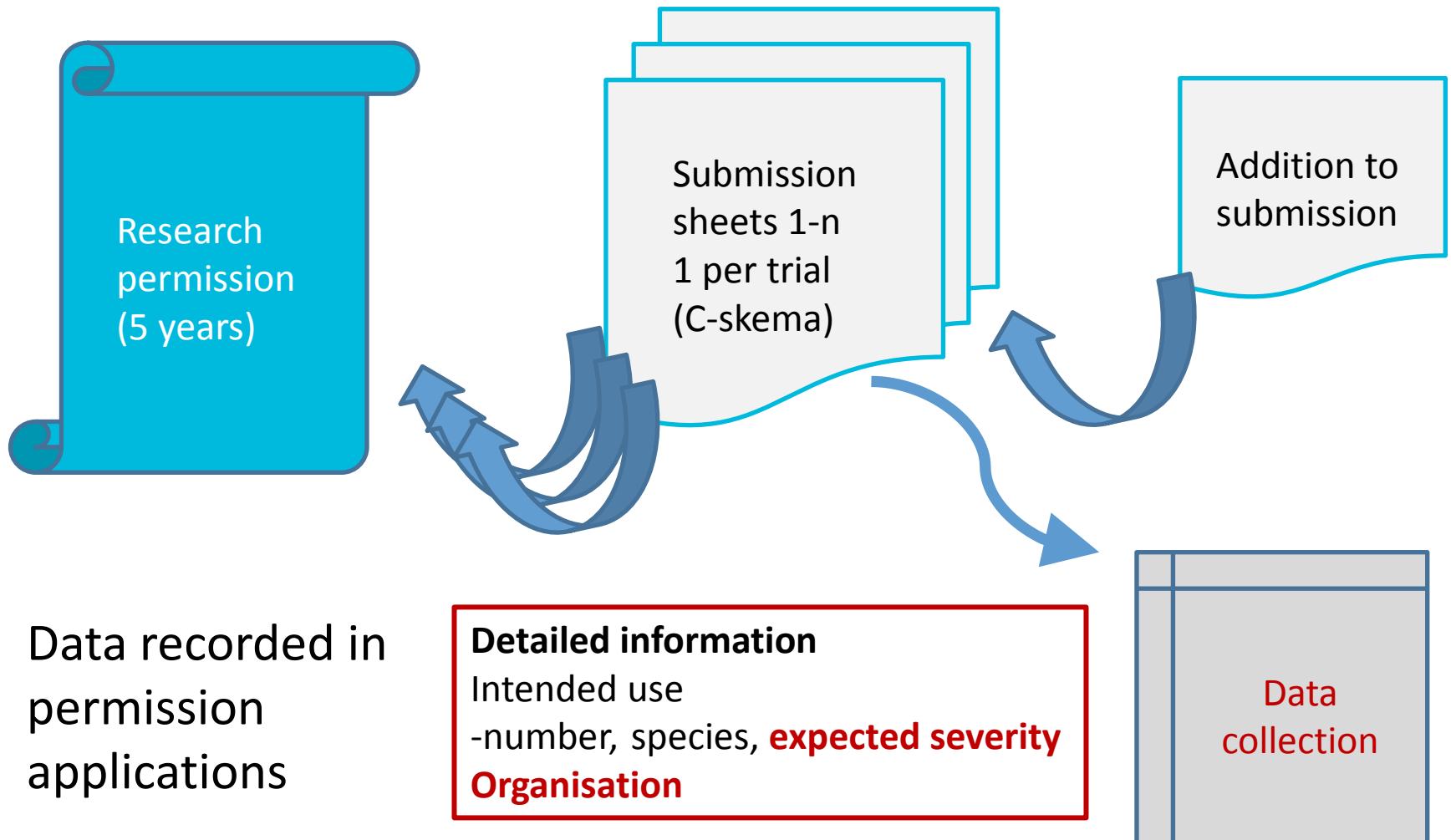
- Create overview
- Use of animals
  - Species
  - Numbers
  - Severity
  - Types of investigations
  - Investigating organisations

- Investigate details to pinpoint focus areas of concern and development opportunities
- Ideas for effective initiatives to reduce animal use in the future
- Knowledge distribution
- Guidance
- Political/administrative actions

# Data collection



# Data collection



# Data collection

Data recorded in DEI  
statistics

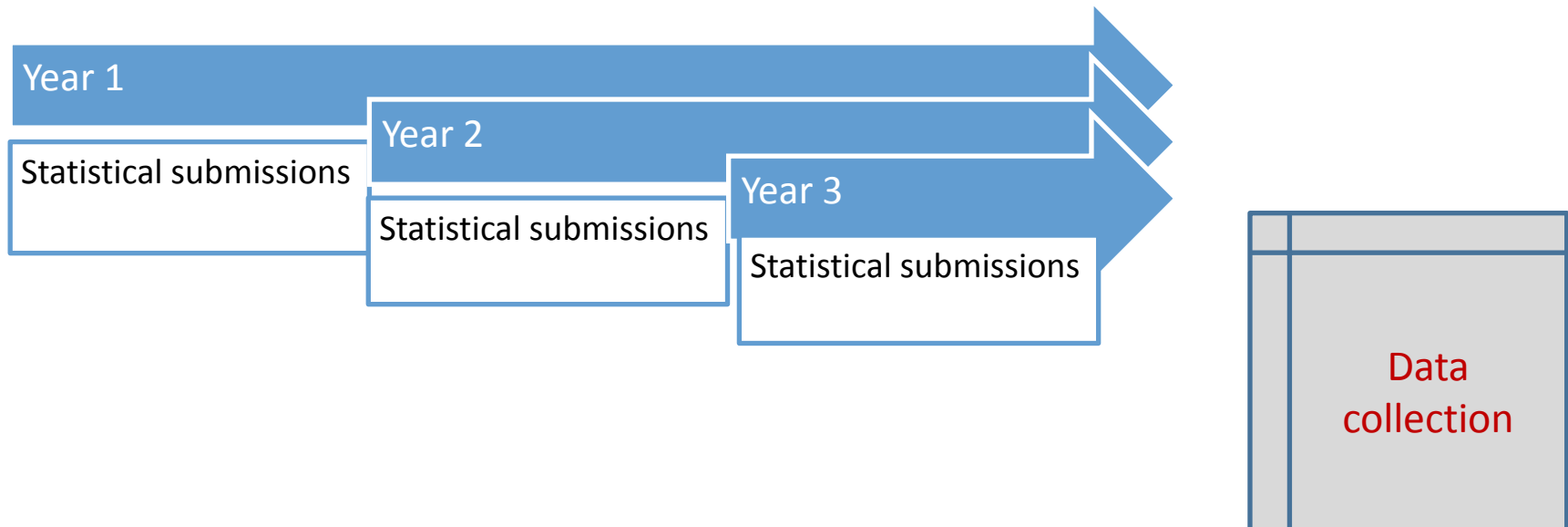
**Crude/exact numbers**

**Actual use**

**numbers**

**species**

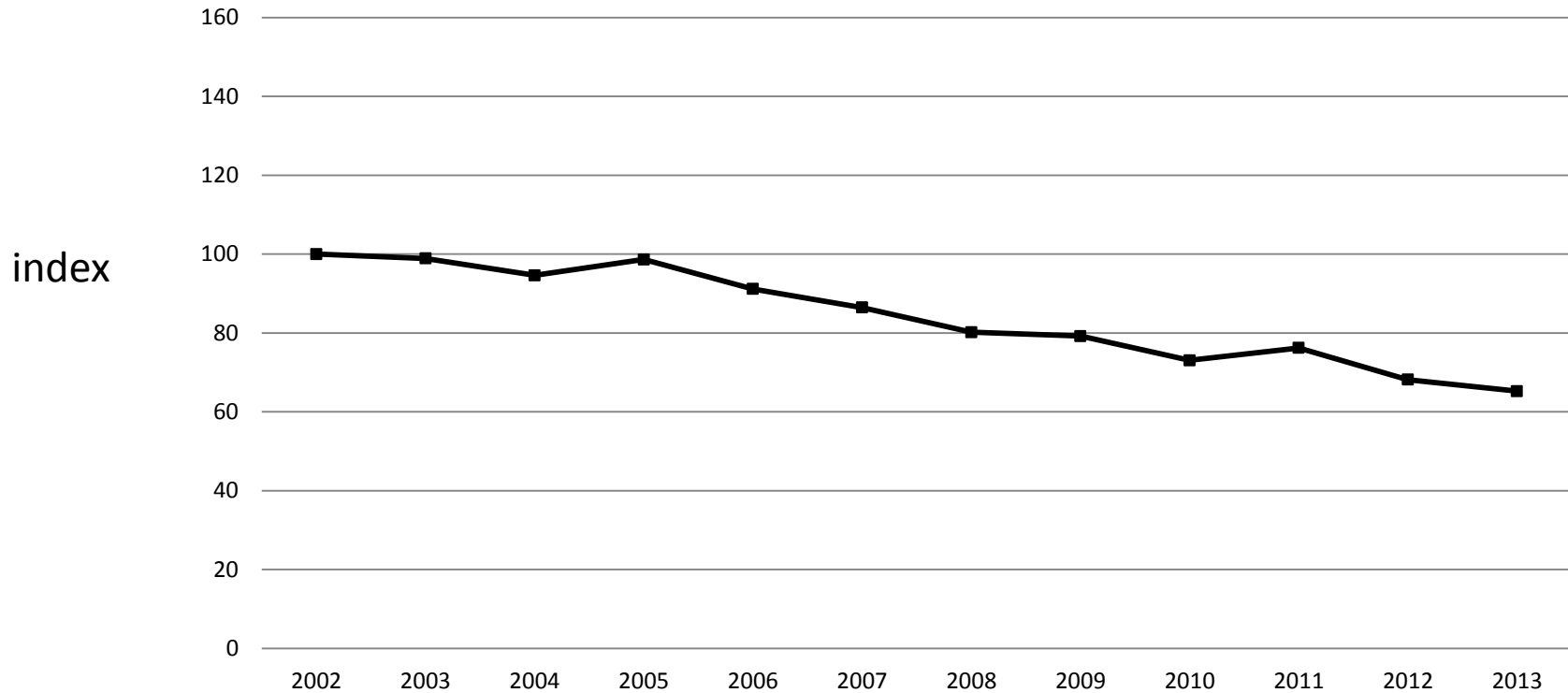
**Use (type of study)**



- Data reported for other purposes
- Submission sheets
  - Multiple severity levels - distribution not available
  - Information in “free text” field in application – not suitable for statistical evaluation
- Annual statistical submissions
  - Very little information

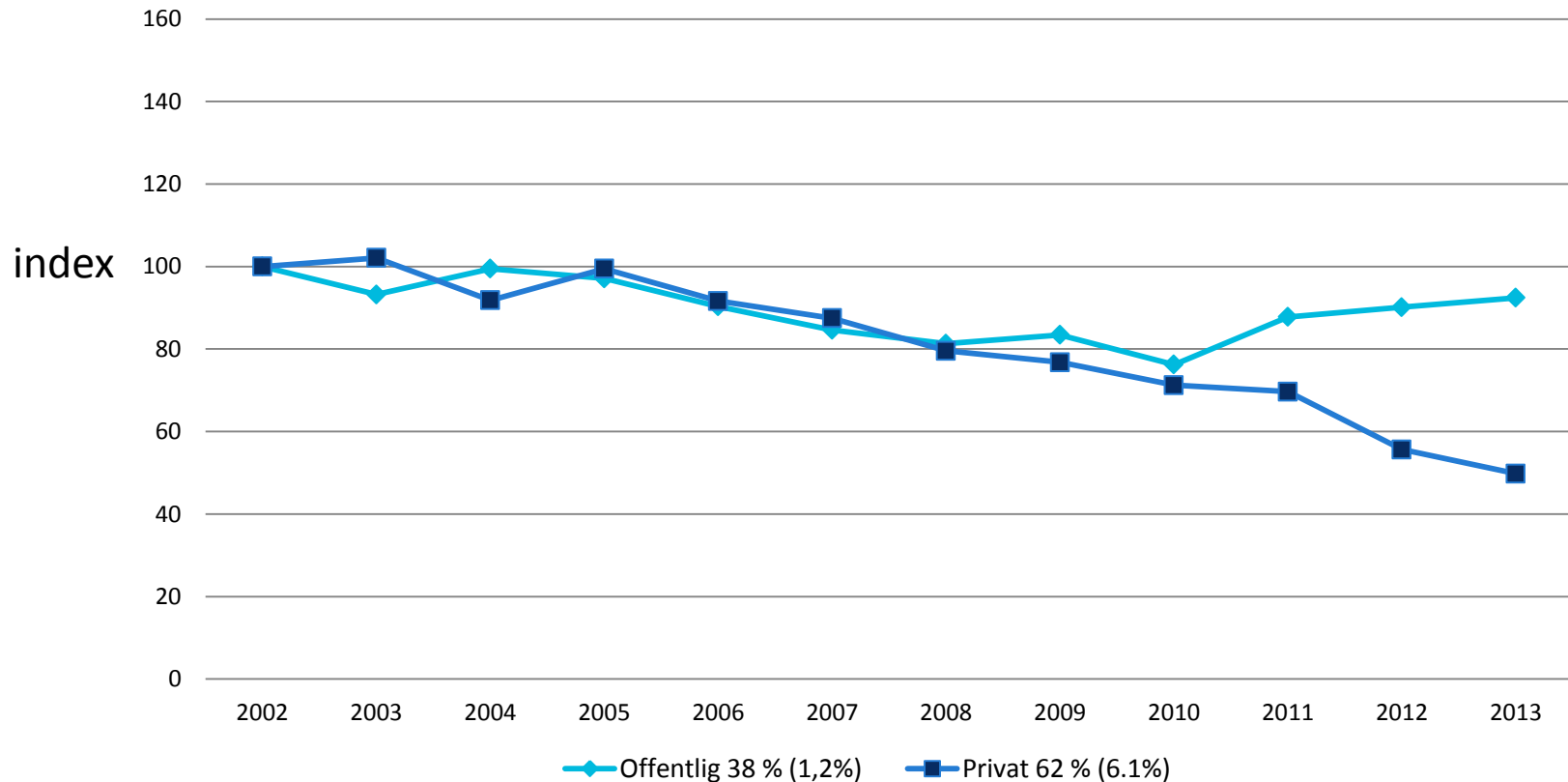


- Number of animals used - total

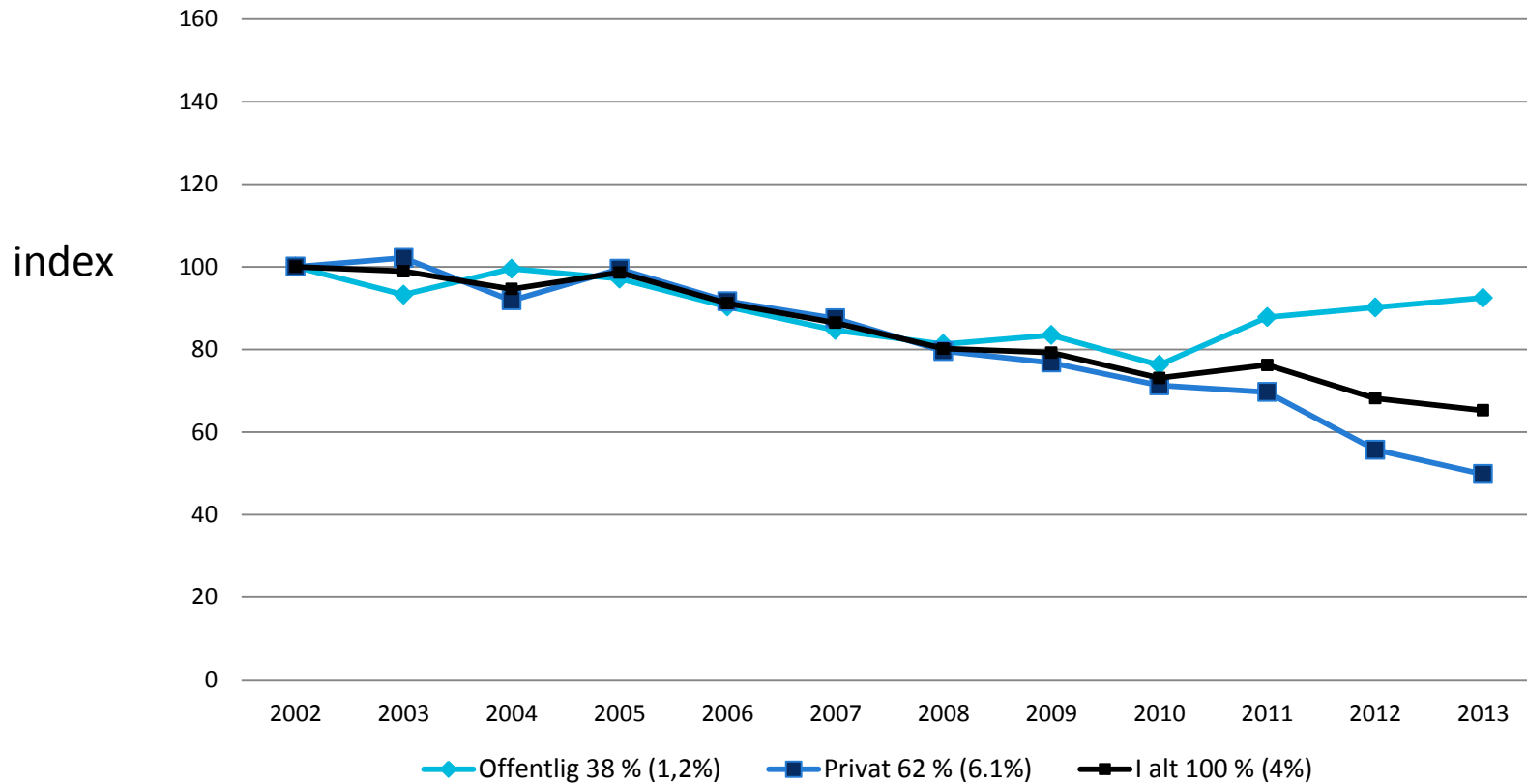


Overall average annual decrease 4%

- Number of animals used – Public and private

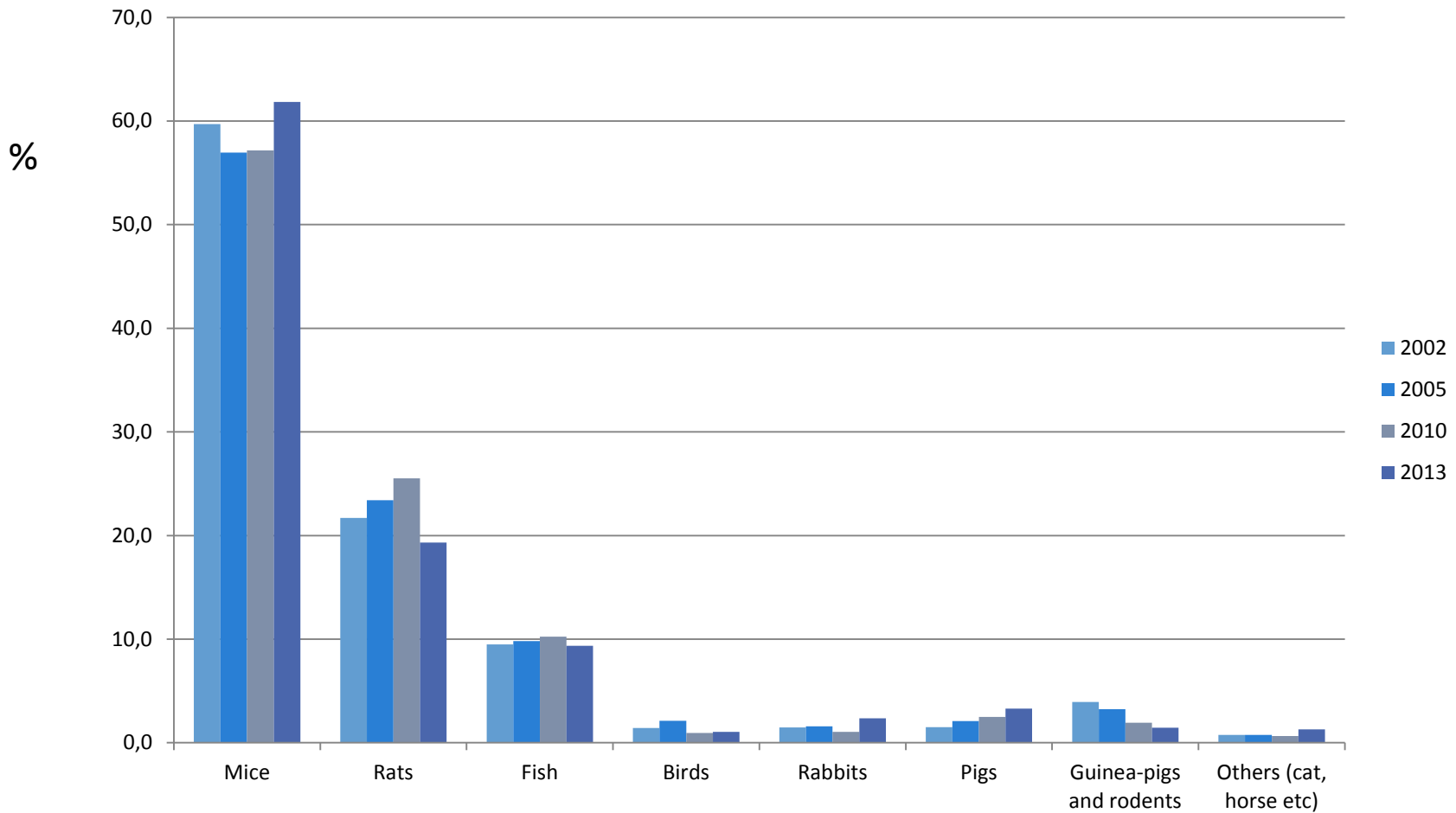


- Number of animals used



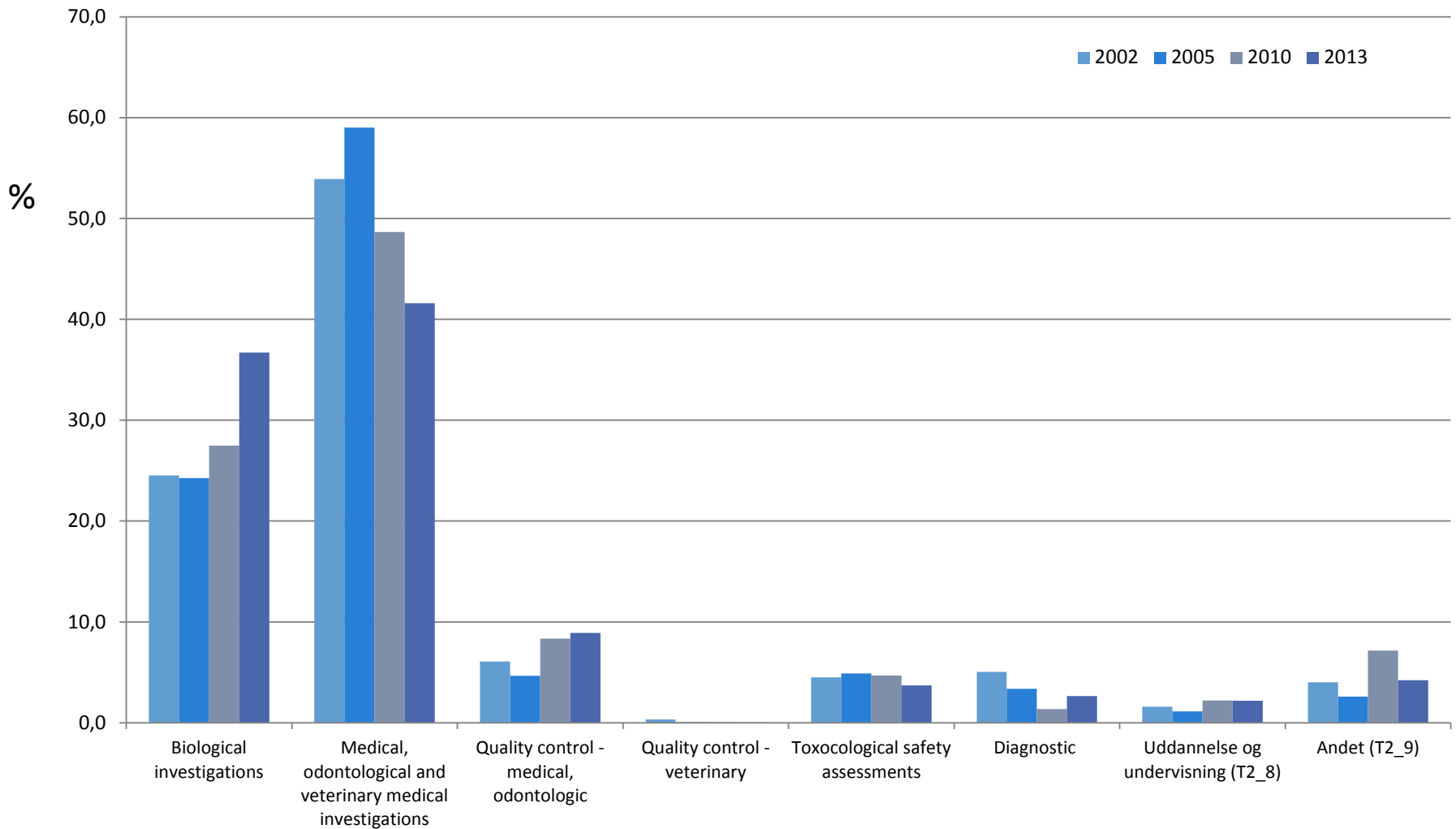
# Preliminary findings

## Species used – selected years



# Preliminary findings

- Types of investigations – selected years



- Interviews
- Investigation of decreases in suffering or numbers
  - Possible use in other settings
    - Techniques
    - Experimental designs
    - ...



- Evaluating benefit of animal experimental use
- Research strength to be evaluated – how?
  - Number of publications/accumulated impact factor
  - Number of places/animals in places implementing new technique derived by animal experimentation
  - Number of animals/humans spared in future investigations
  - Number of new drugs developed
  - Financial investment in research pr animal

- New EU regulated statistical reporting
  - Improved information regarding severity reports
    - Actual recorded severity
    - Include inherent severity in harmful genotypes
  - Reporting on animal level





# The Danish 3R-Center



Thank you for  
your attention!

- Severity
- Study - based – submission sheet

# Preliminary findings

- Severity expectations – example
- Mice

