



William Russell & Rex Burch (Image published courtesy of Fund for the Replacement of Animals in Medical Experiments. [www.frame.org.uk](http://www.frame.org.uk))

W.M.S. Russell and R.L. Burch:  
*The Principles of  
Humane Experimental Technique*

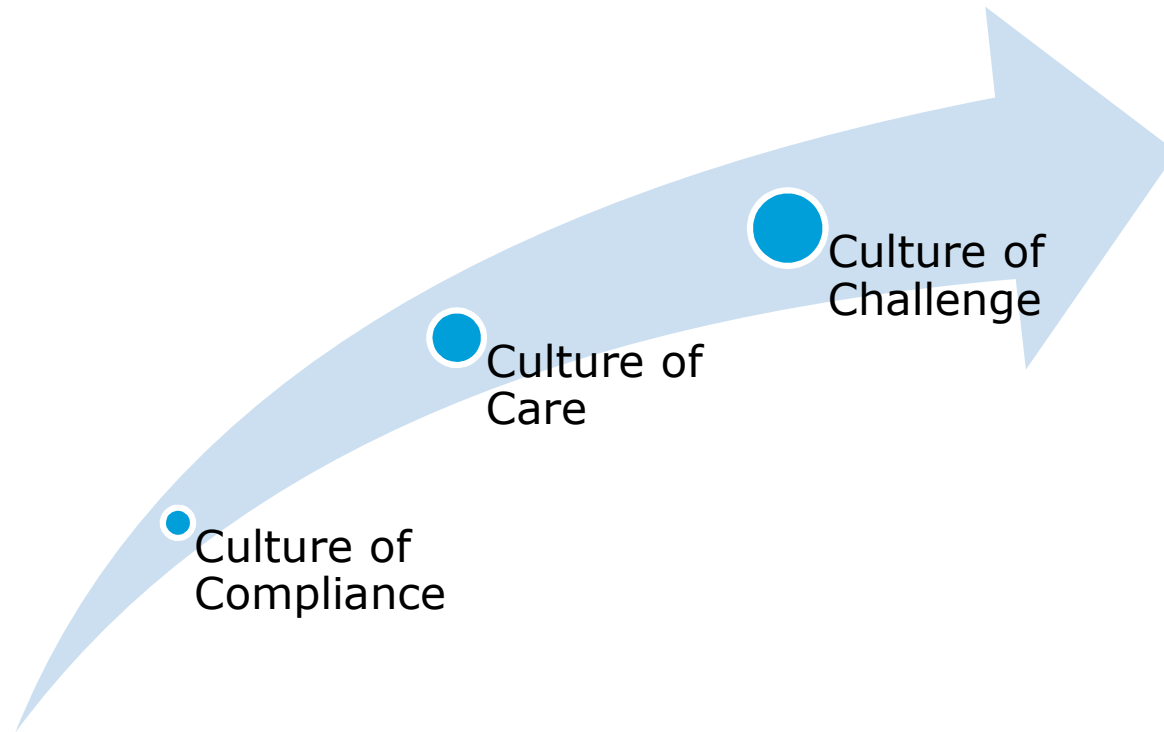
1959 – it's **60** years ago!

Culture of Care?

- DIRECTIVE 2010/63/EU on the protection of animals used for scientific purposes
  - The word 'care' is mentioned 36 times in the Directive.
  - Recital 31:
    - Animal-welfare considerations should be given the highest priority .....
    - The [animal-welfare] body should ..... **foster a climate of care** .....
    - ..... in relation to the principles of replacement, reduction and refinement, in order to enhance the life-time experience of the animals.
    - No mentioning in the articles of the Directive
    - No mentioning in Danish legislation

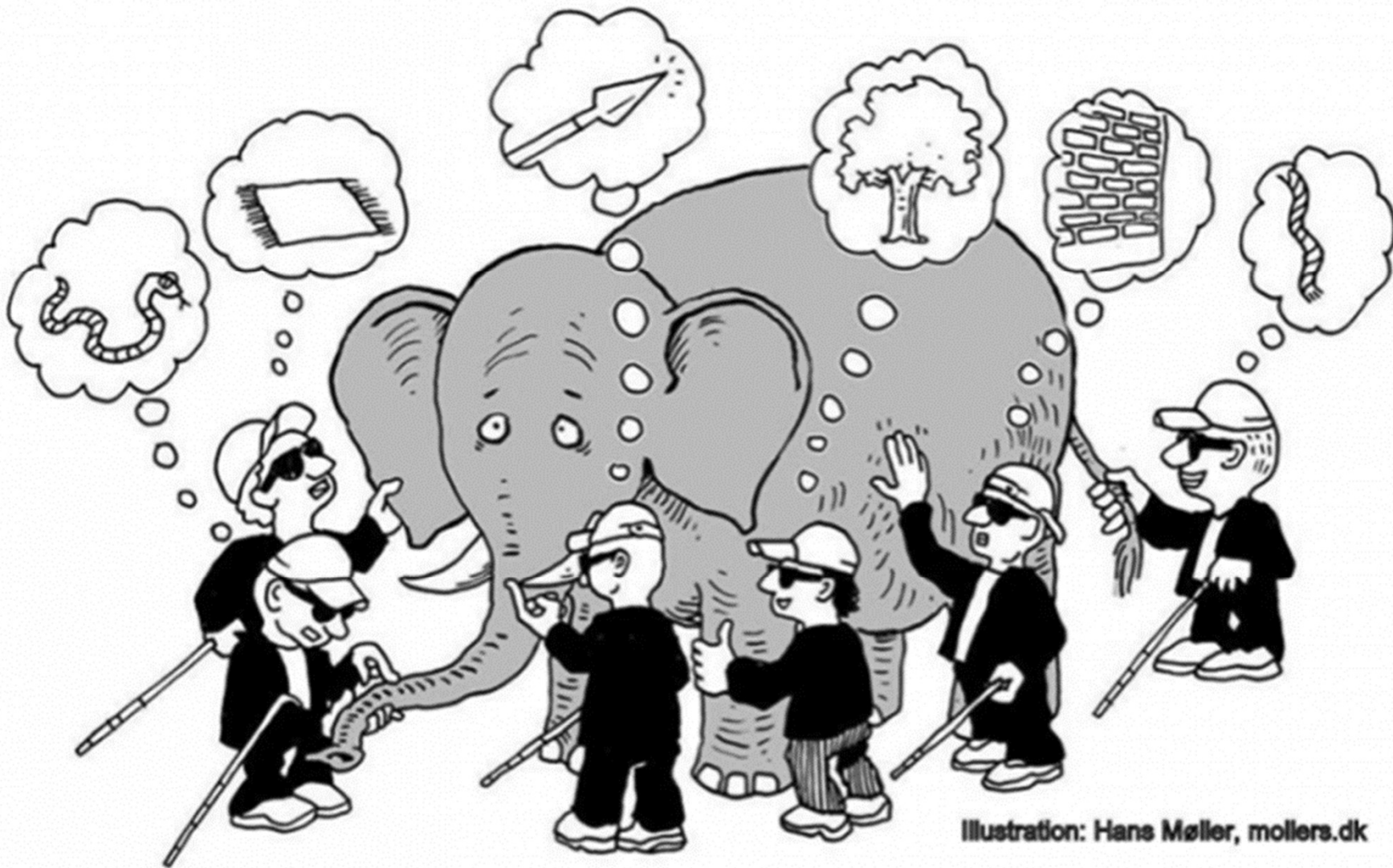
Engineering standards – It's about <b>doing things right</b>	Performance standards – It's about <b>doing the right things</b>
Legislation	Outcomes – better animal welfare
Cage sizes etc	Culture of Care
SOPs etc	

- The use of environmental enrichment and changing housing conditions
- It is OK to say "I don't like this"
  - e.g. the emotional costs of euthanising animals, potentially leading to compassionate fatigue
- Non-scientific arguments (ethical, moral etc.) has gained more acceptance in the scientific community.
  - The 'tone' of the dialogue has changed from being reactive and patronising to become more listening and acknowledging.
- Culture of Care – and the animal centric perspective
  - Animal welfare, scientific outcomes and staff wellbeing goes hand in hand



- FELASA 2016:  
Tennis anyone?

The International  
Culture of Care  
Network

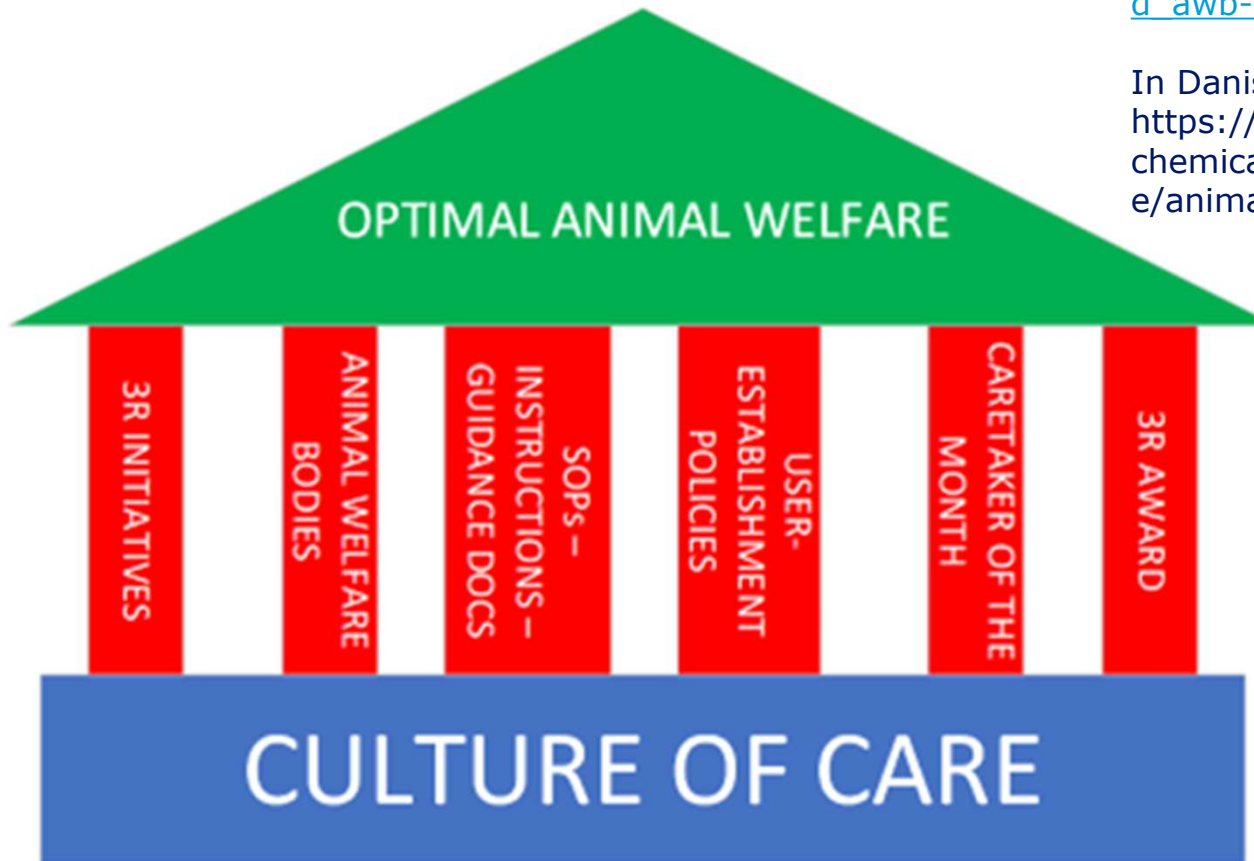


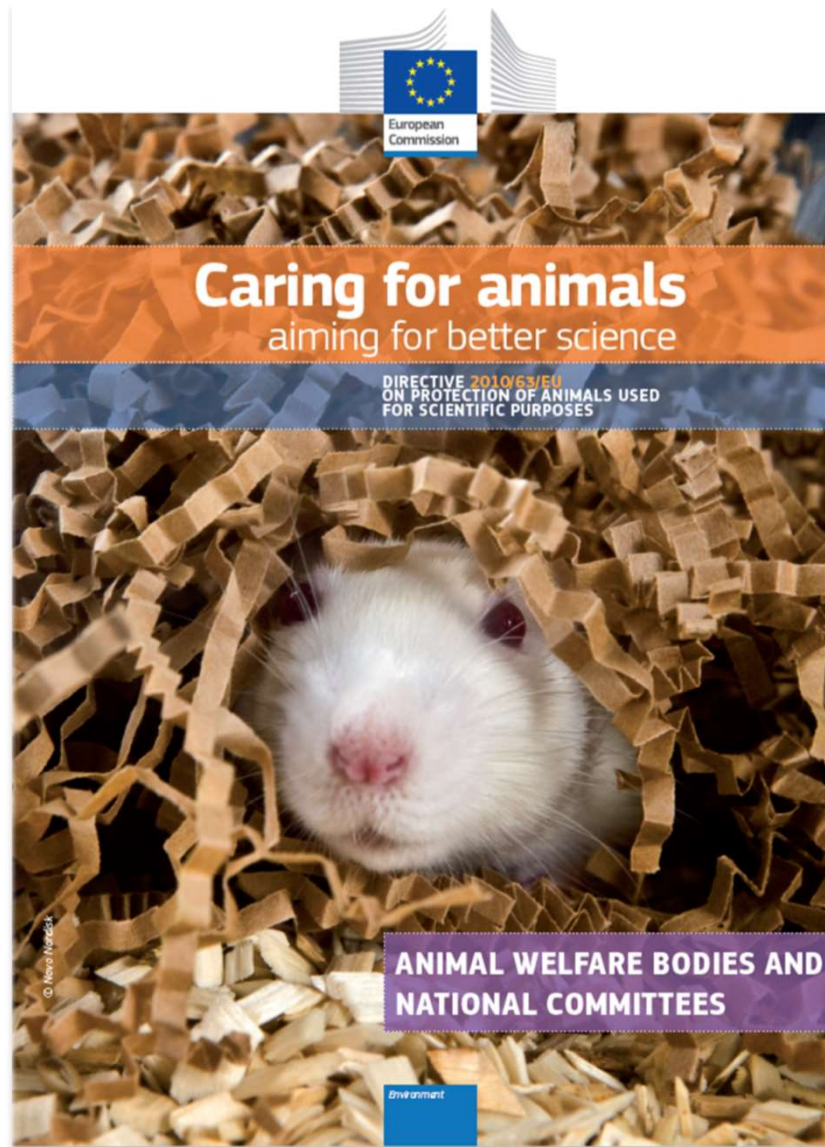


The  
outcome

[https://ec.europa.eu/environment/chemicals/lab\\_animals/pdf/endorse\\_d\\_awb-nc.pdf](https://ec.europa.eu/environment/chemicals/lab_animals/pdf/endorse_d_awb-nc.pdf)

In Danish:  
[https://ec.europa.eu/environment/chemicals/lab\\_animals/pdf/guidance/animal\\_welfare\\_bodies/da.pdf](https://ec.europa.eu/environment/chemicals/lab_animals/pdf/guidance/animal_welfare_bodies/da.pdf)





[https://ec.europa.eu/environment/chemicals/lab\\_animals/pdf/endorsed\\_awb-nc.pdf](https://ec.europa.eu/environment/chemicals/lab_animals/pdf/endorsed_awb-nc.pdf)

In Danish:  
[https://ec.europa.eu/environment/chemicals/lab\\_animals/pdf/guidance/animal\\_welfare\\_bodies/da.pdf](https://ec.europa.eu/environment/chemicals/lab_animals/pdf/guidance/animal_welfare_bodies/da.pdf)



**Thank you for your attention**