

“Cellular heterogeneity as predictor for the differentiation and regenerative potential of bone marrow stromal cells”

The Danish 3R Symposium 2021

Ali Jamil, PhD student

Molecular Endocrinology Unit (KMEB),

Odense University Hospital / University of Southern Denmark



University of
Southern Denmark

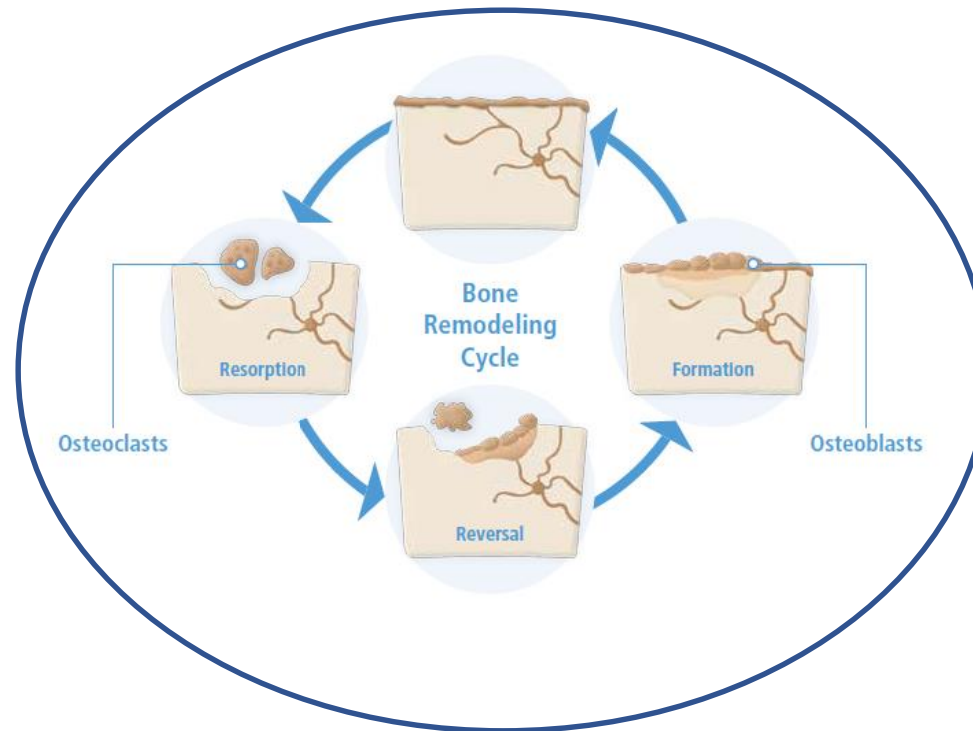
Background



Background



Bone remodelling



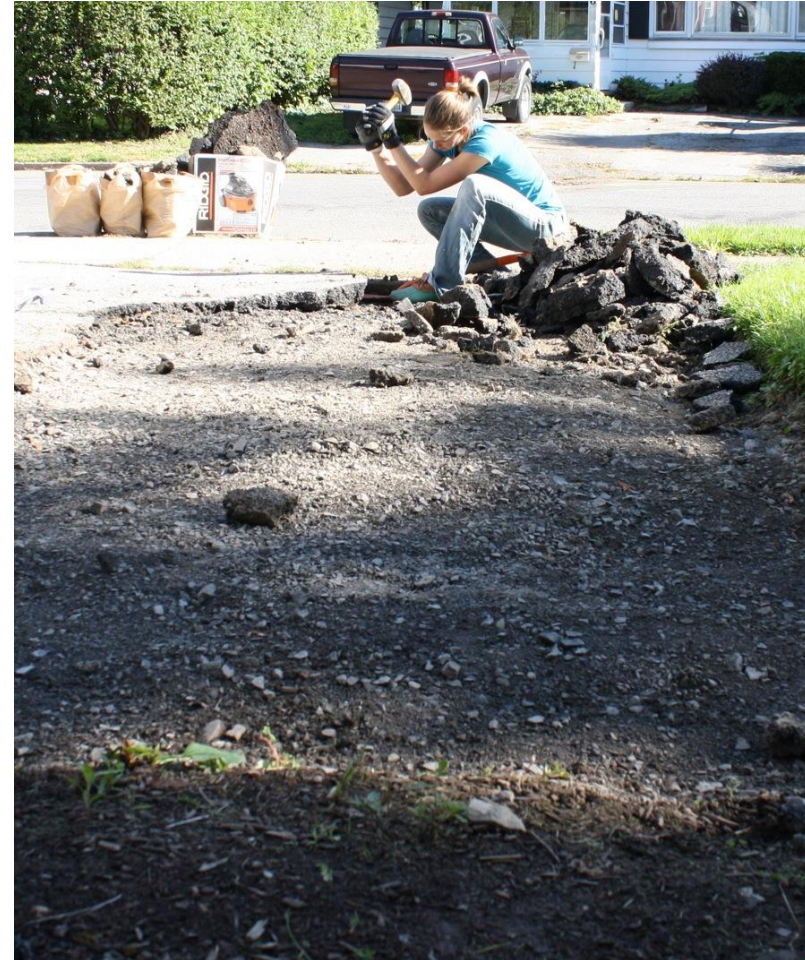
Background



Background



**Step 1:
Remove**



Background



**Step 1:
Remove**

**Step 2:
Pour new**



Background



**Step 1:
Remove**

+

**Step 2:
Pour new**



Background

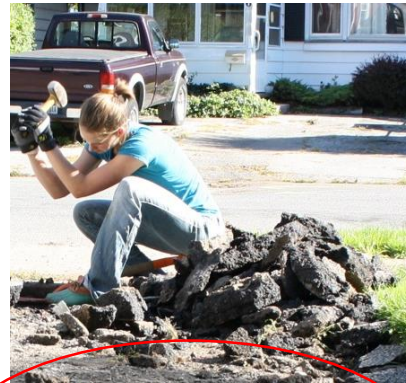
Old bone



**Step 1:
Remove**

+

**Step 2:
Pour new**



New bone



Osteoclast cells

Osteoblast cells



Background

Old bone



**Step 1:
Remove**

+

**Step 2:
Pour new**



New bone



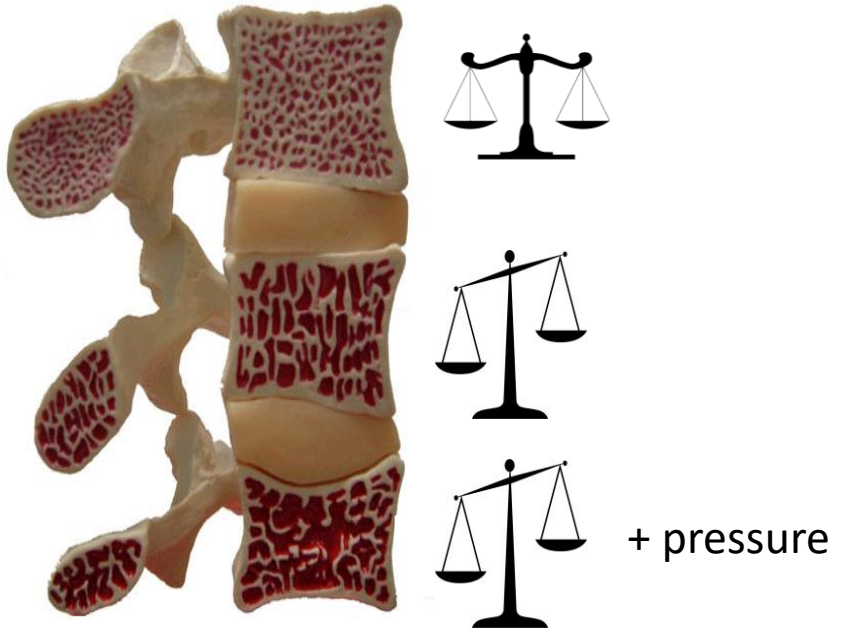
Osteoclast cells

Osteoblast cells



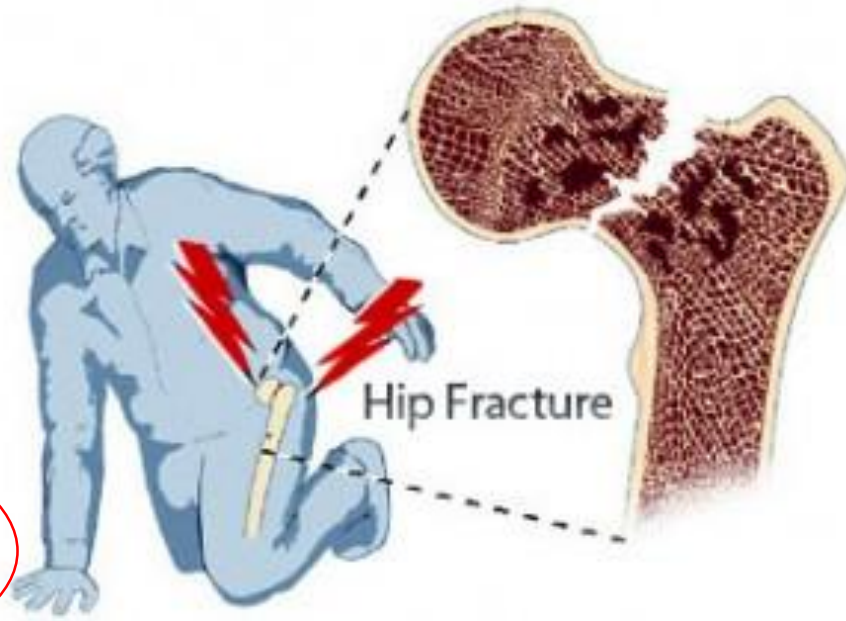
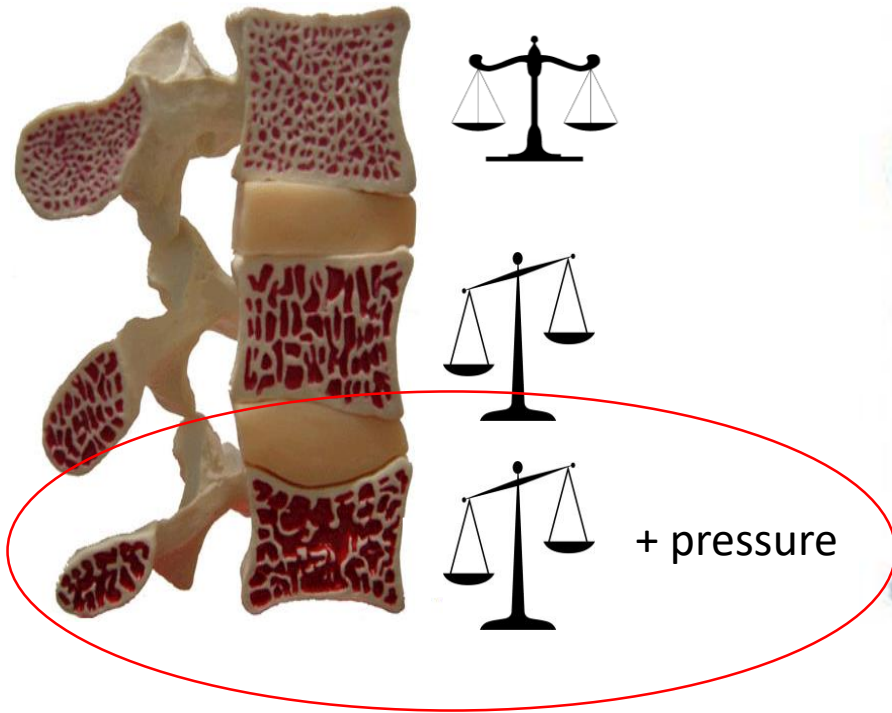
Background

Osteoporosis



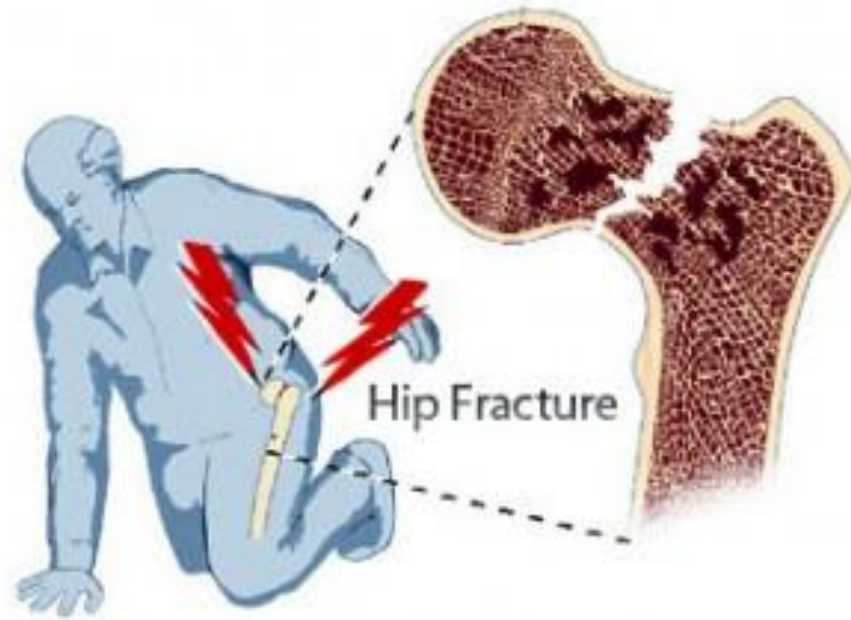
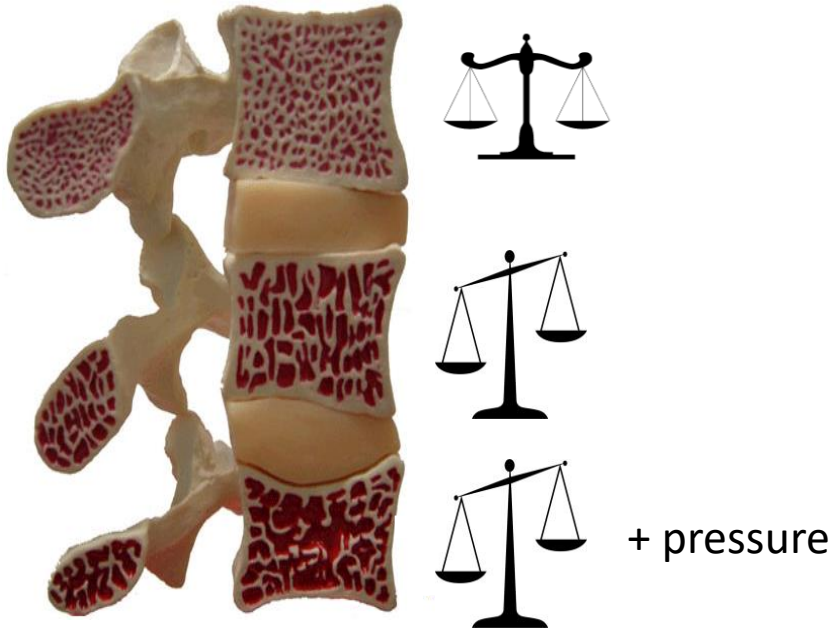
Background

Osteoporosis



Background

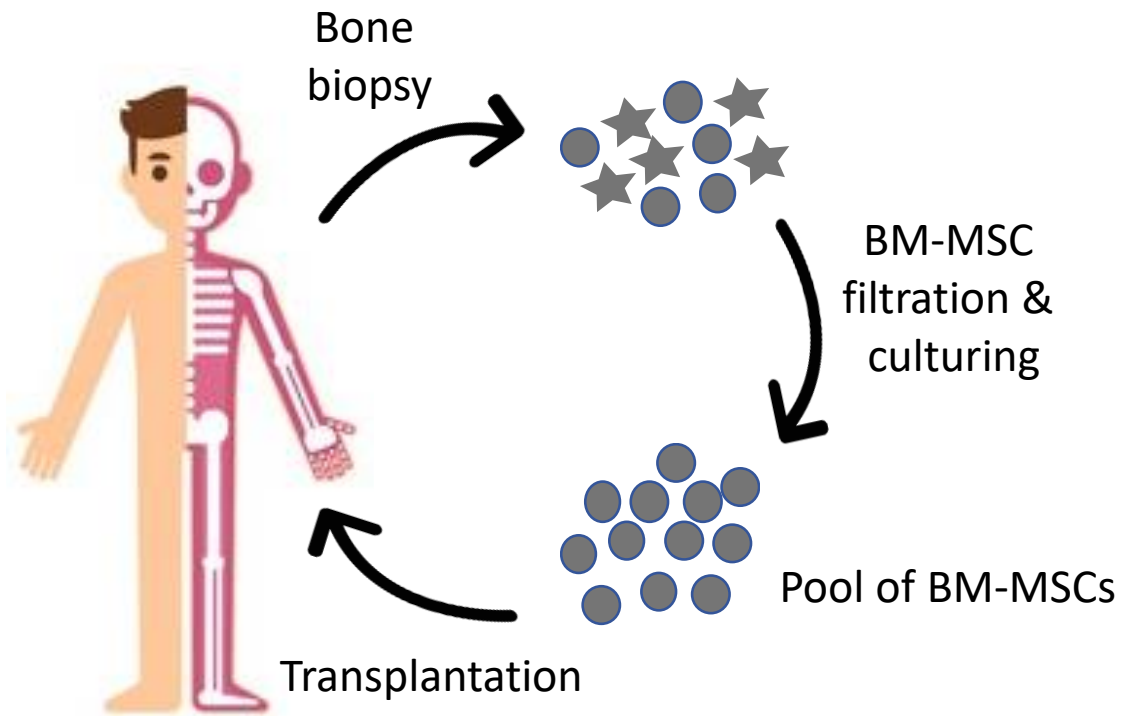
Osteoporosis



Cell Transplantation

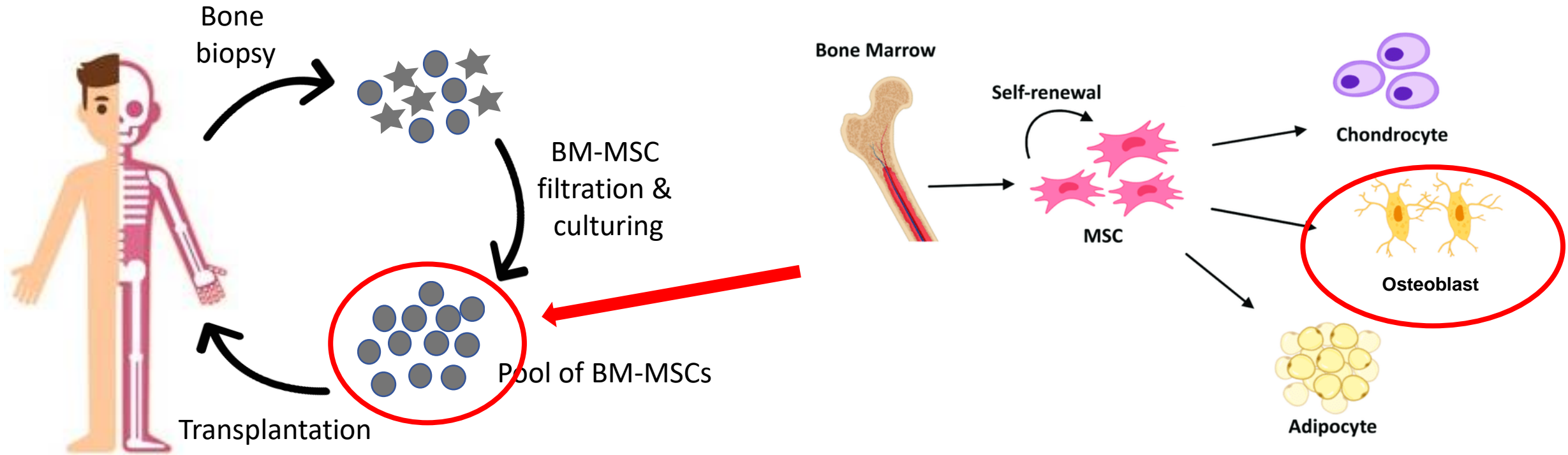
Background

Cell transplantation



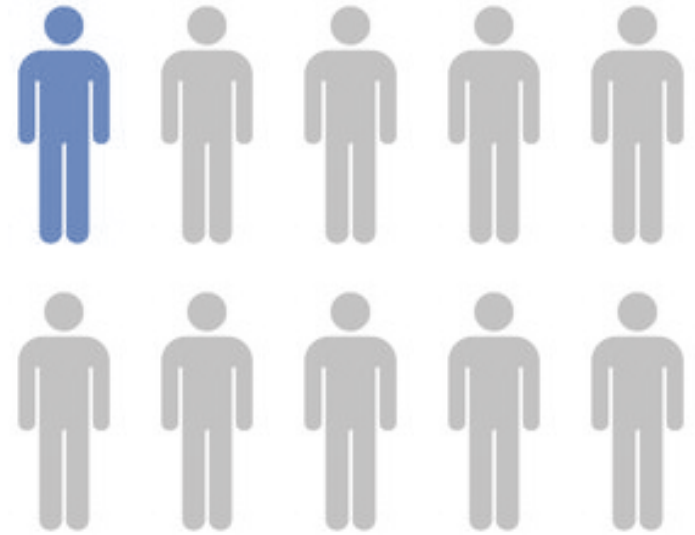
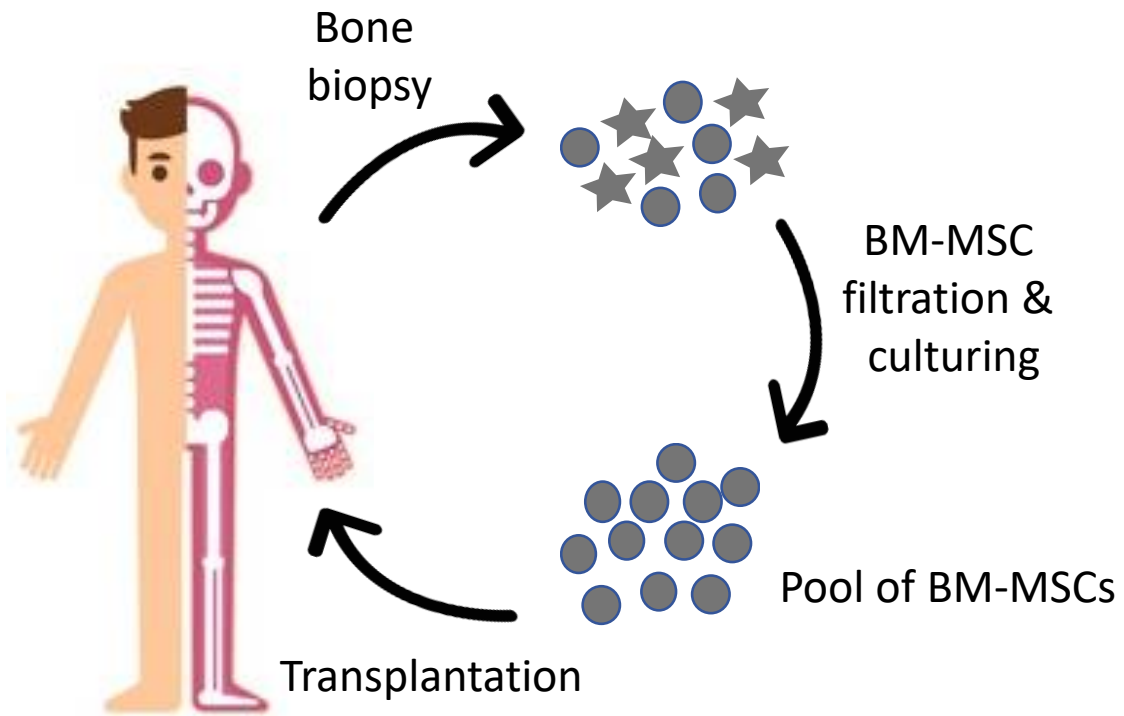
Background

Cell transplantation



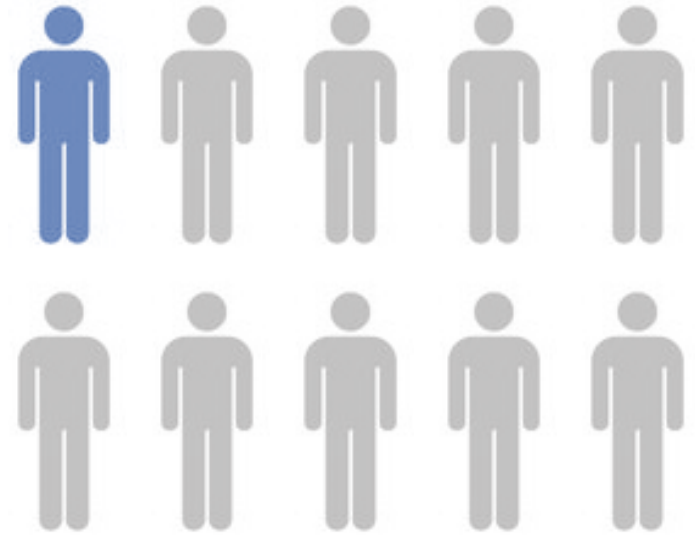
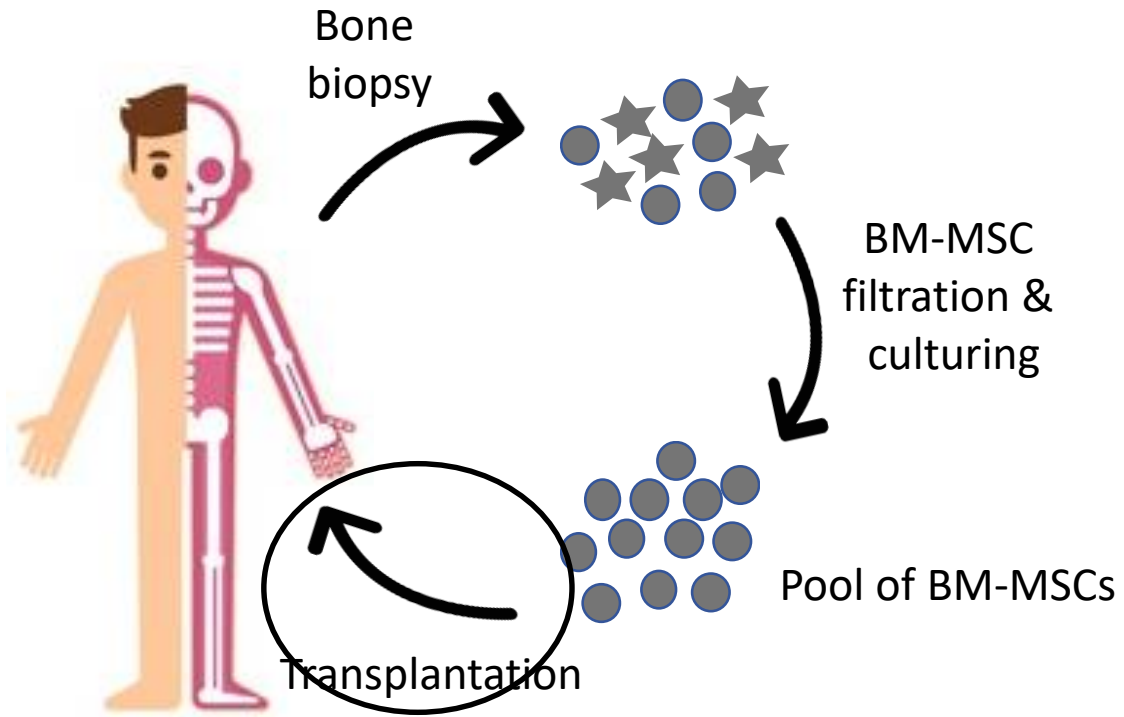
Background

Cell transplantation



Background

Cell transplantation

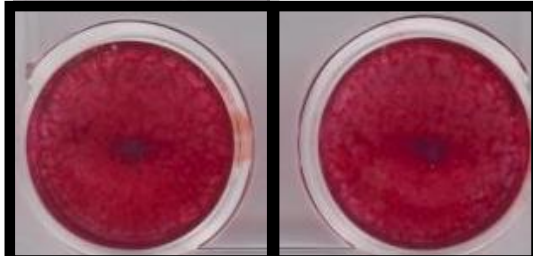


Background

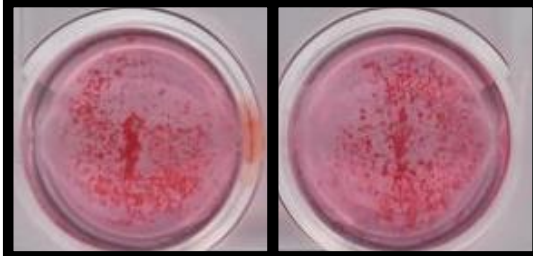
Cohort size = 56

Donor examples:

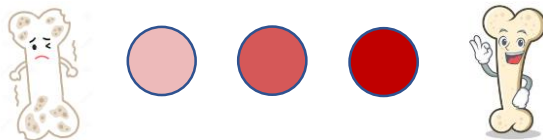
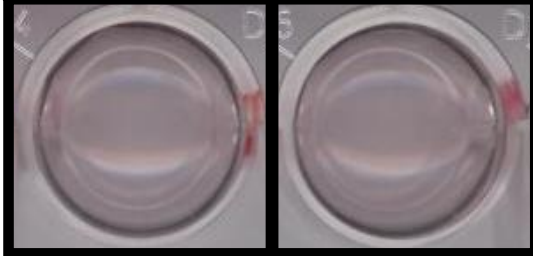
Donor 1



Donor 2



Donor 3

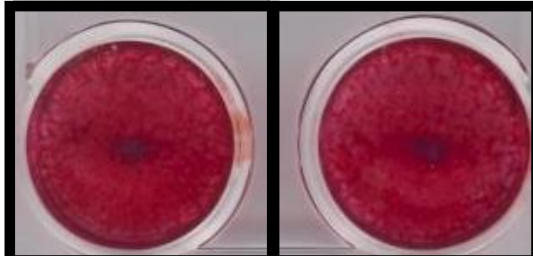


Background

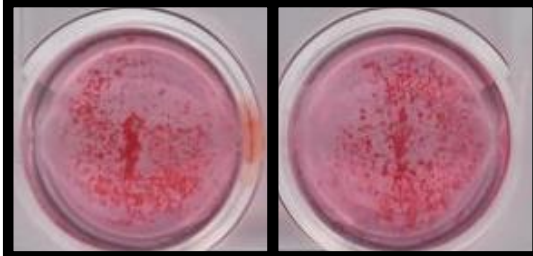
Cohort size = 56

Donor examples:

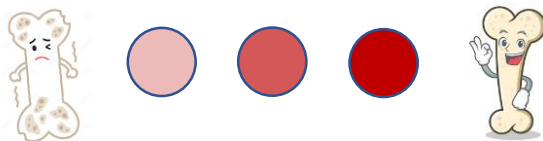
Donor 1



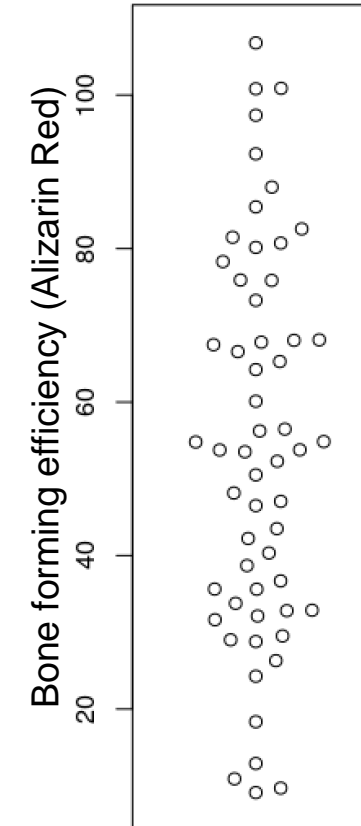
Donor 2



Donor 3



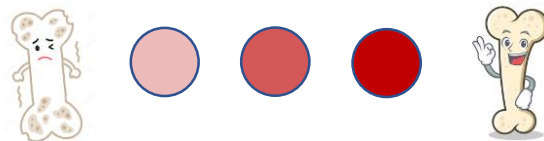
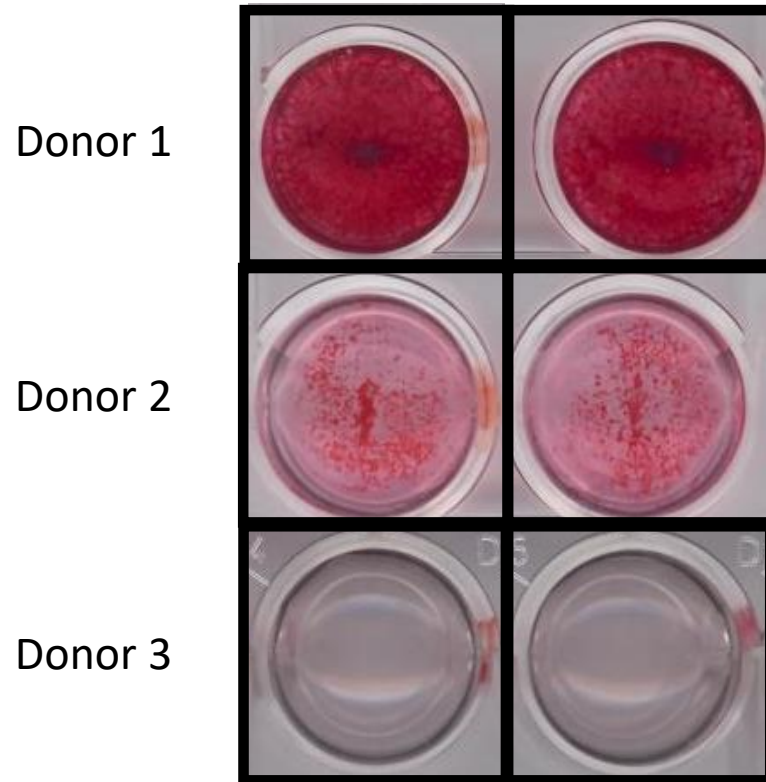
All donors:



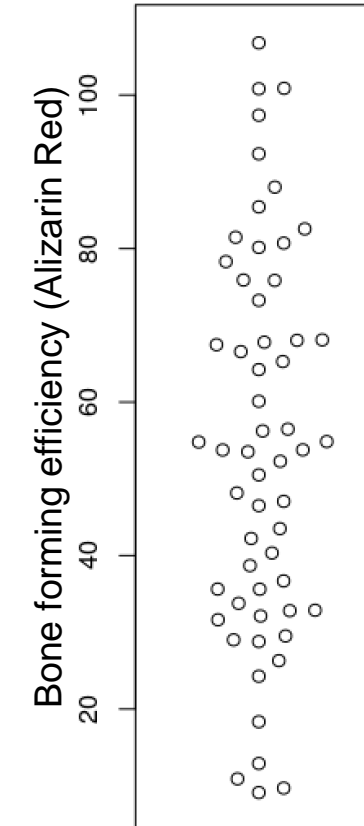
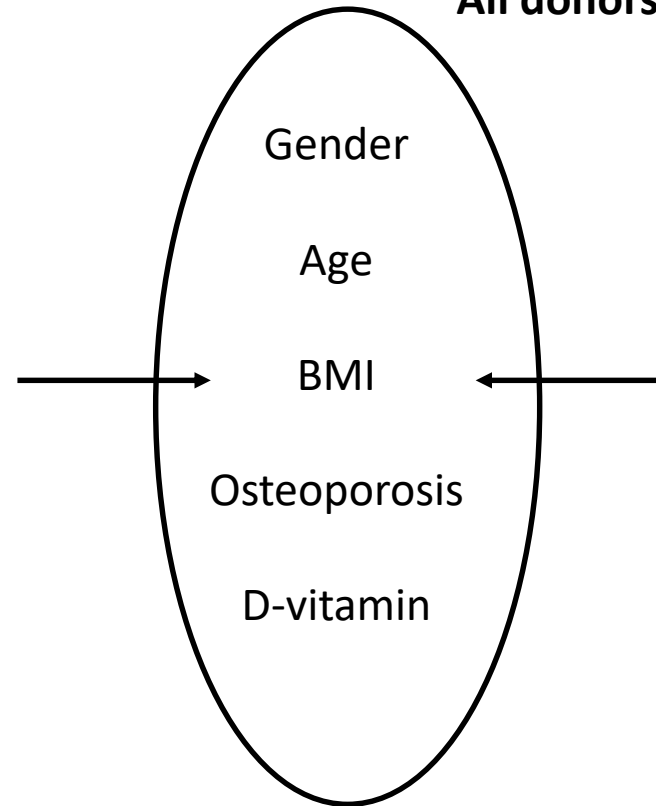
Background

Cohort size = 56

Donor examples:



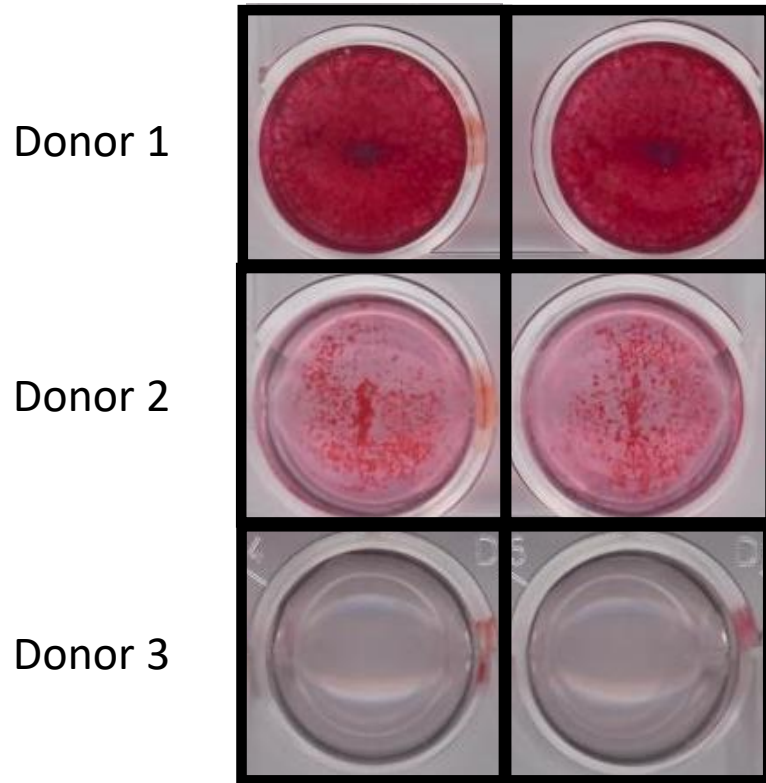
All donors:



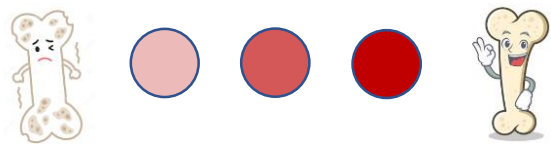
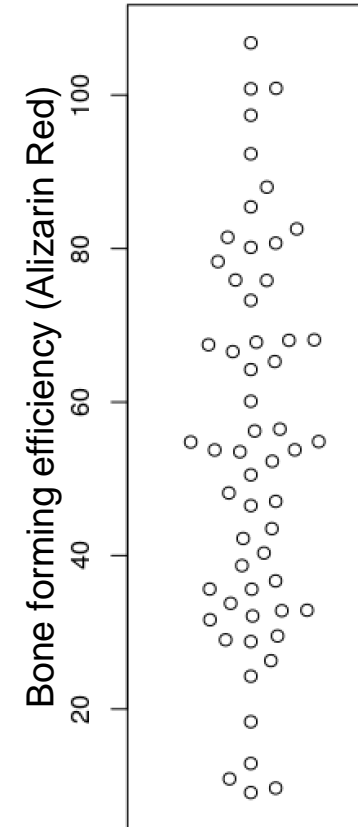
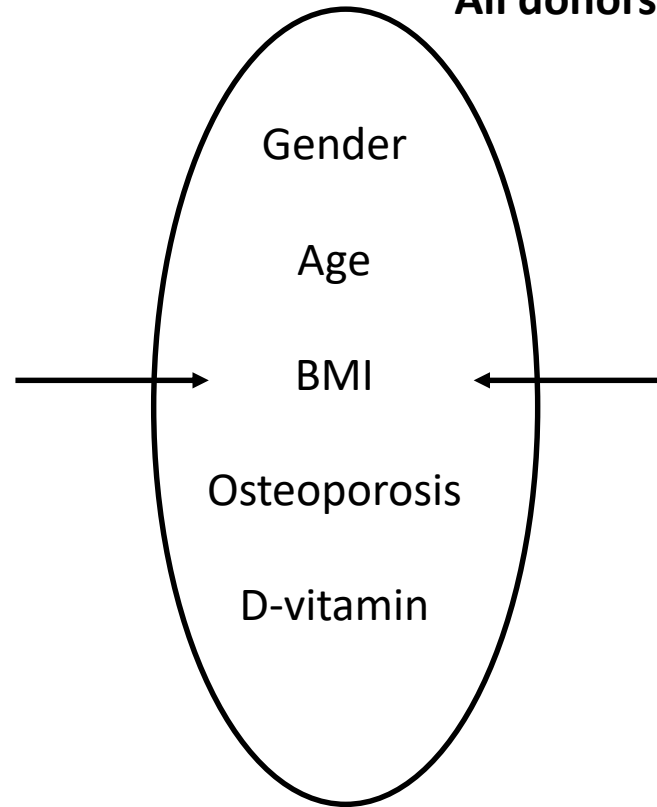
Background

Cohort size = 56

Donor examples:



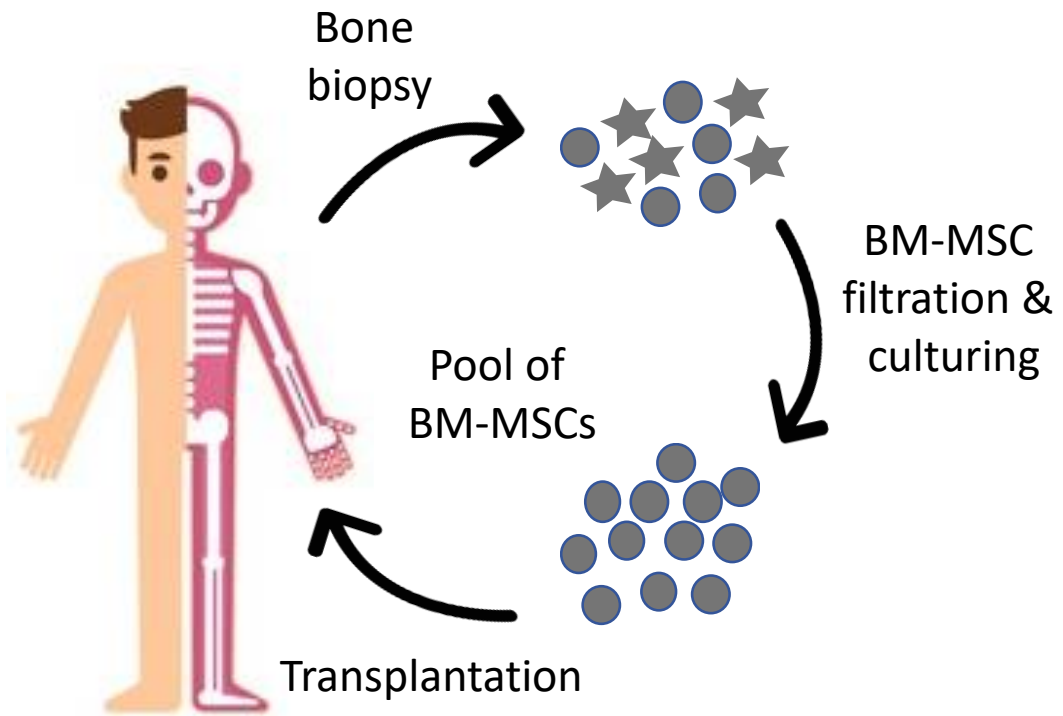
All donors:



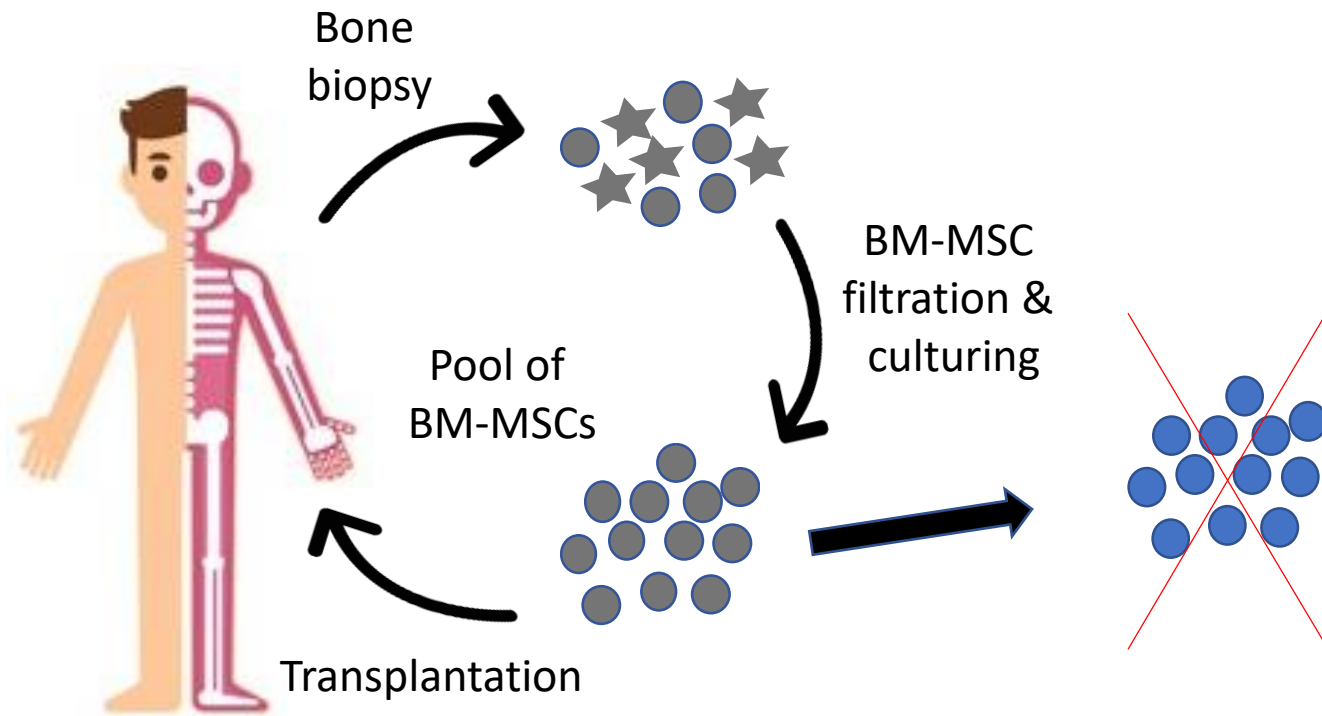
50% potency explained



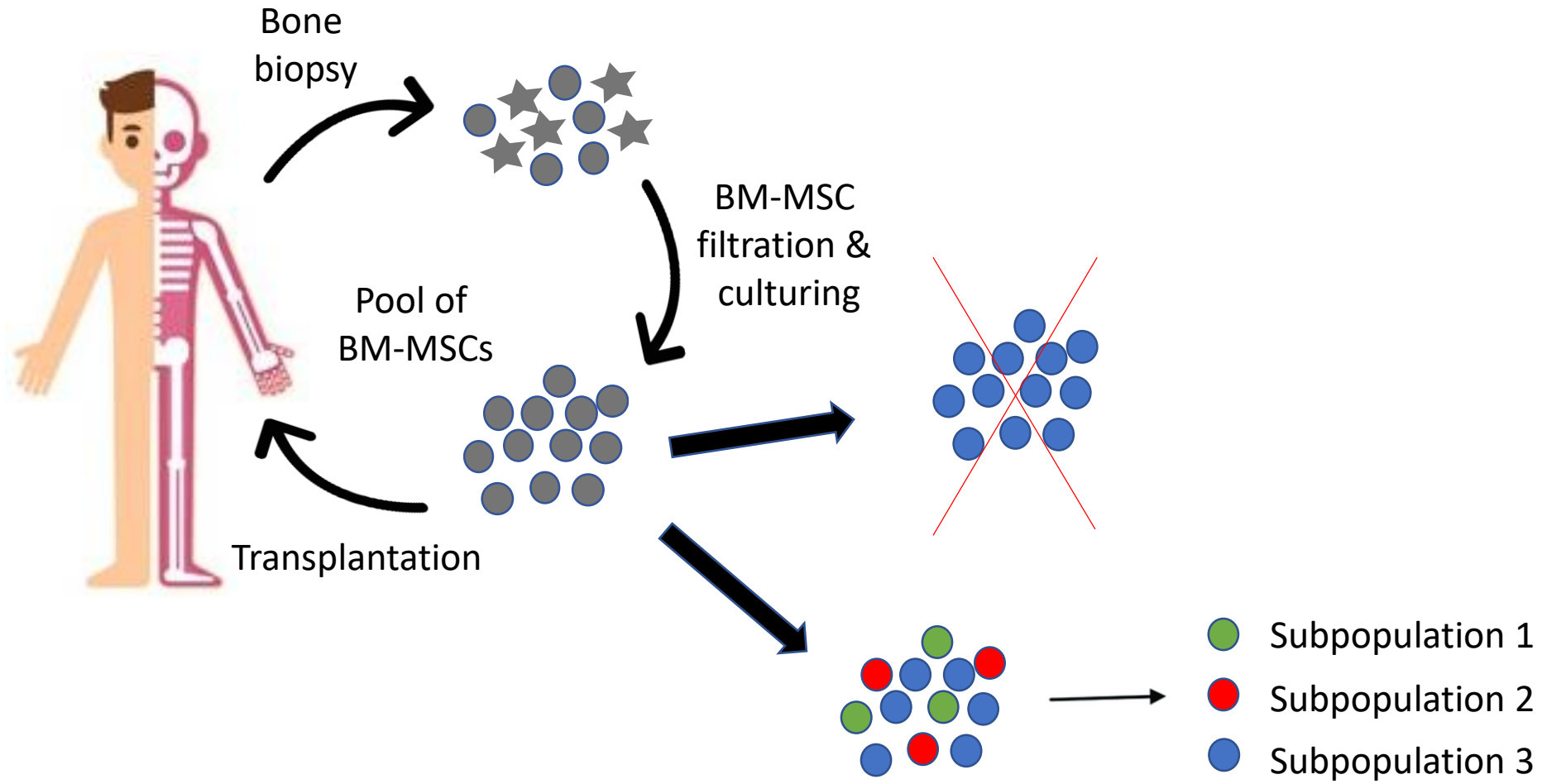
Hypothesis



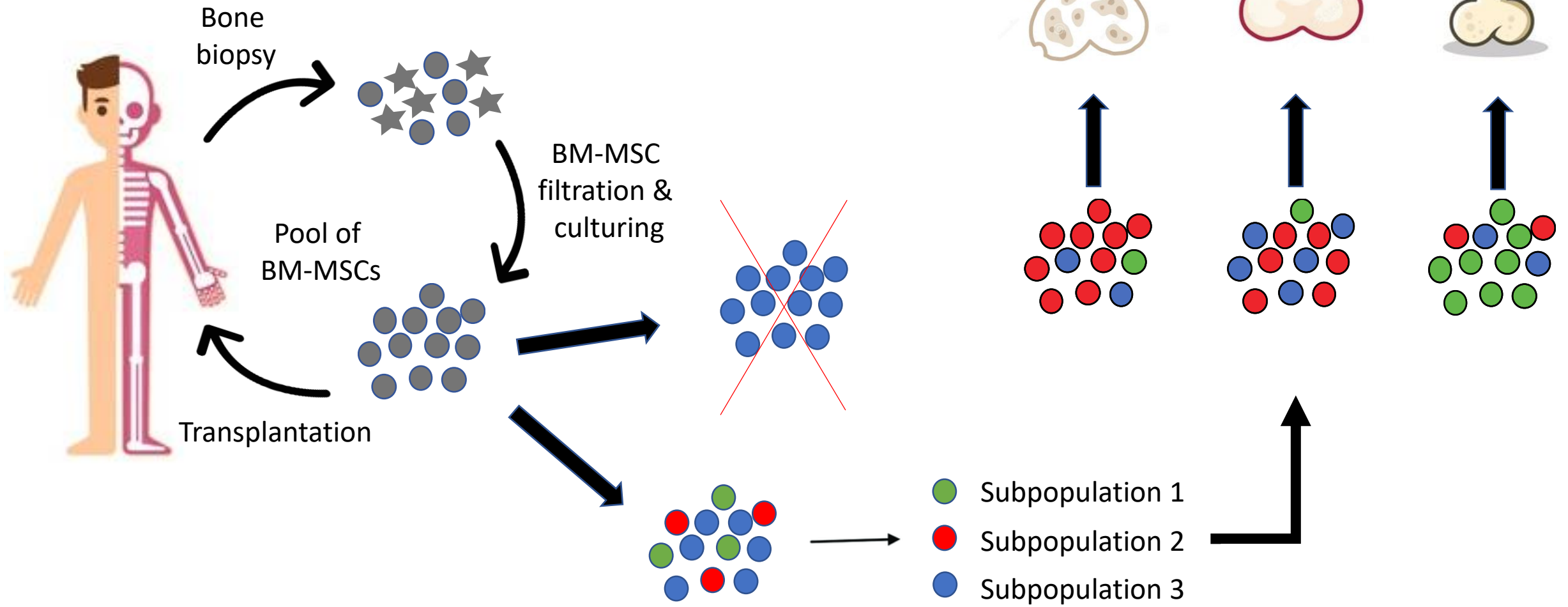
Hypothesis



Hypothesis

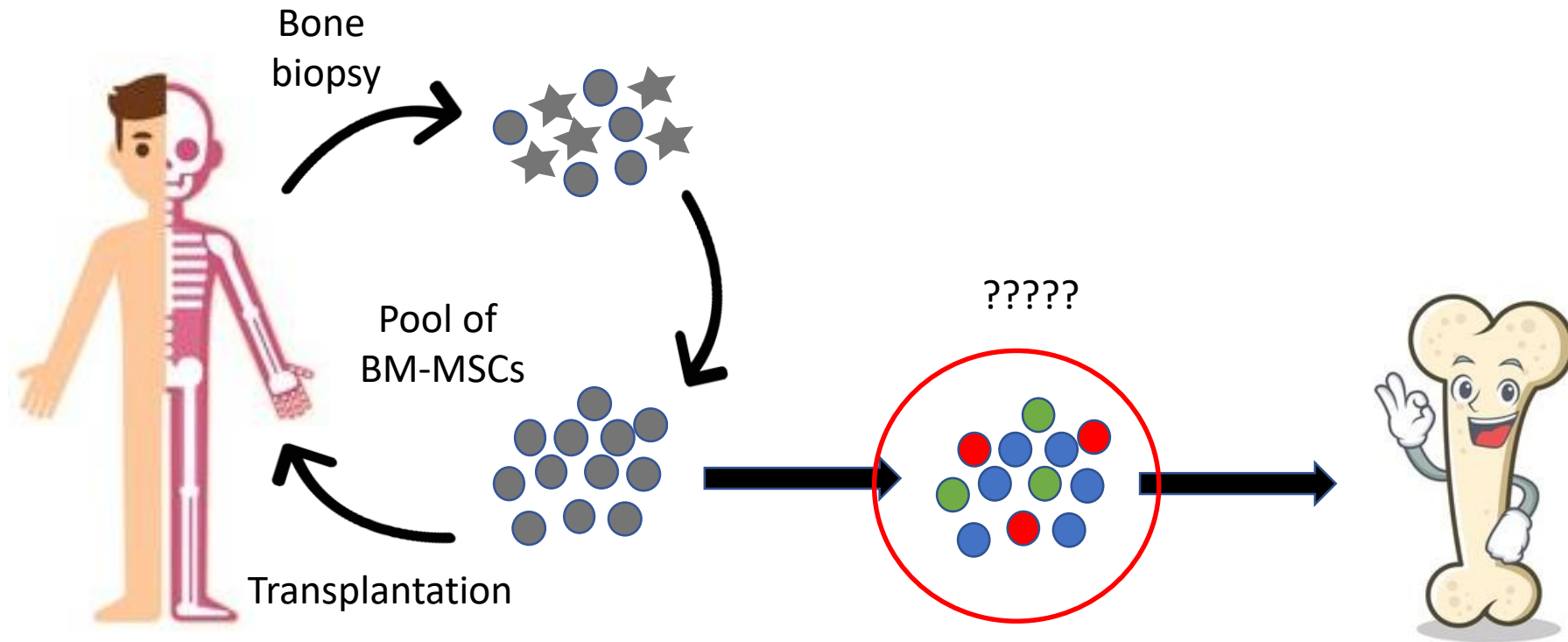


Hypothesis

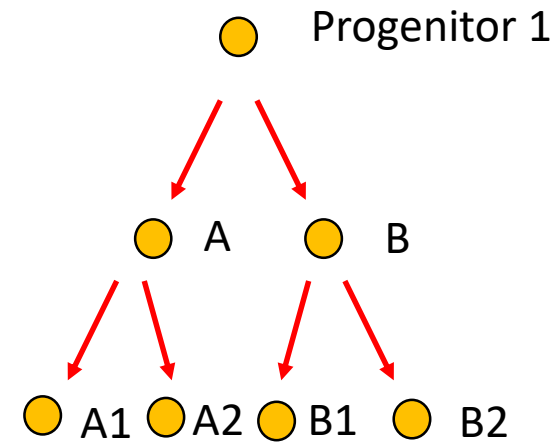
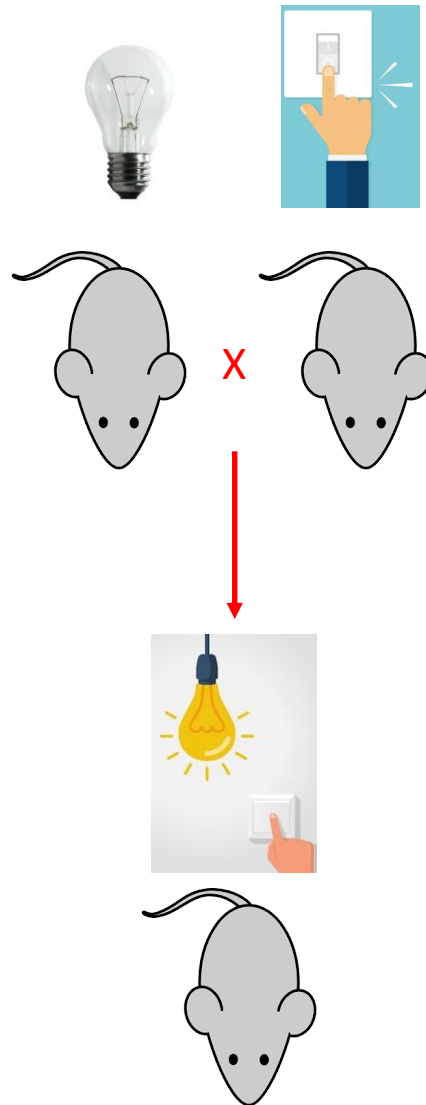


Overall aim

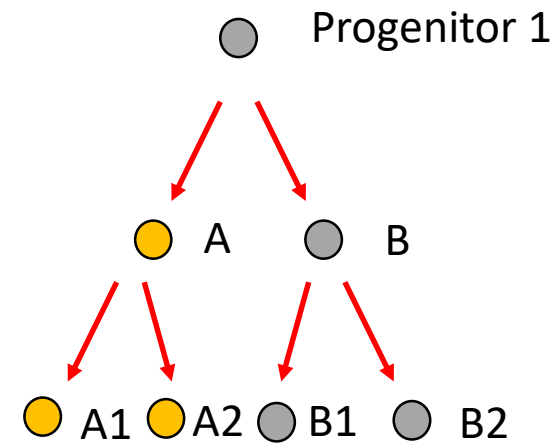
To investigate how cellular heterogeneity within patient-derived BM-
MSCs affect osteogenic differentiation and bone tissue regeneration
potential.



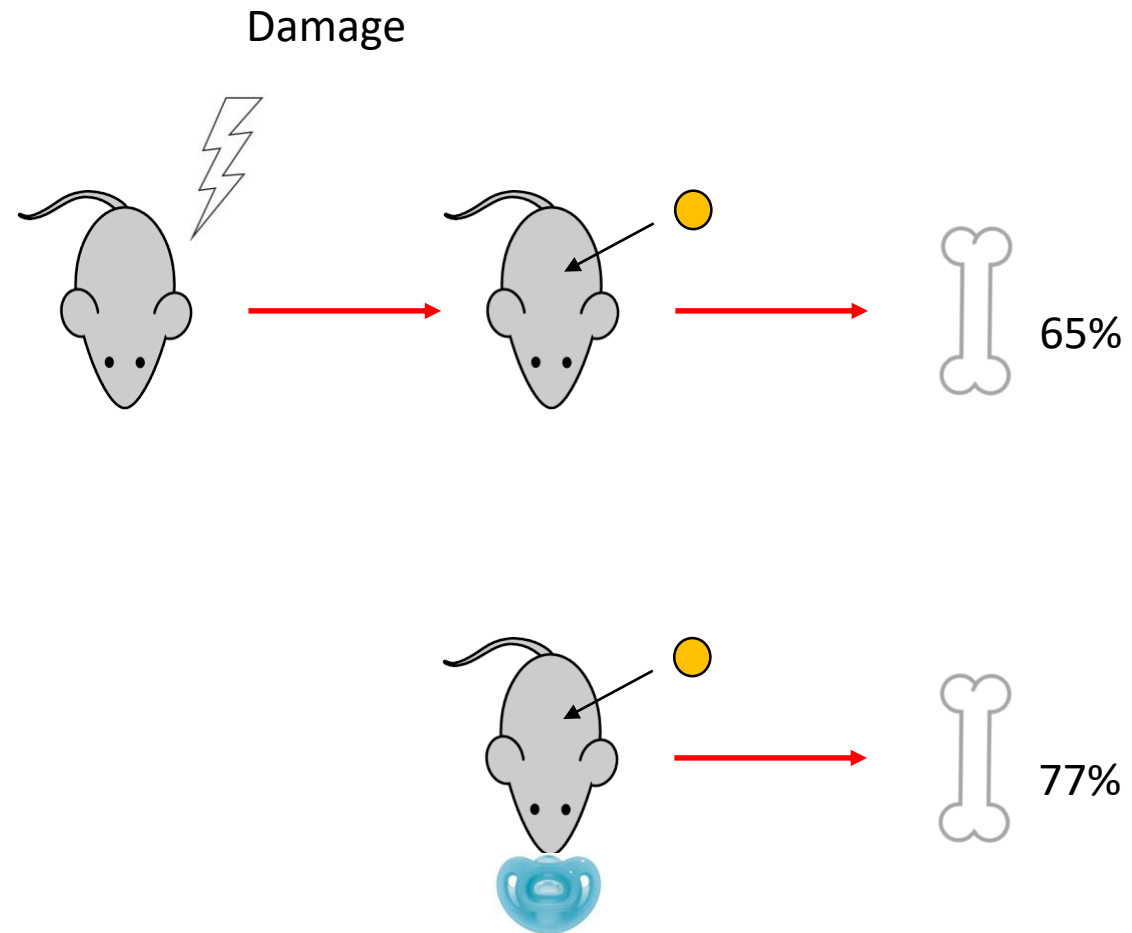
Lineage tracing



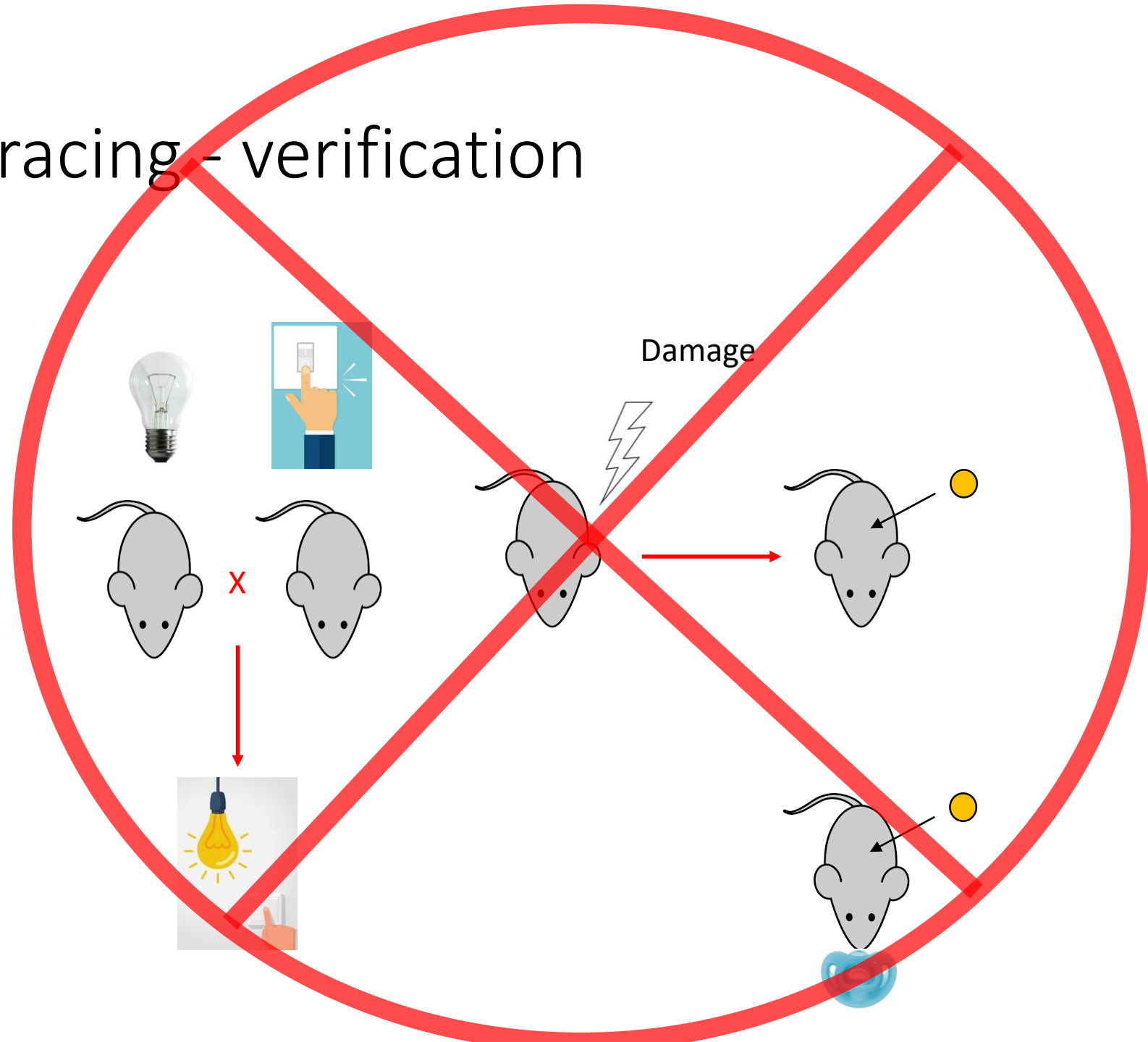
or



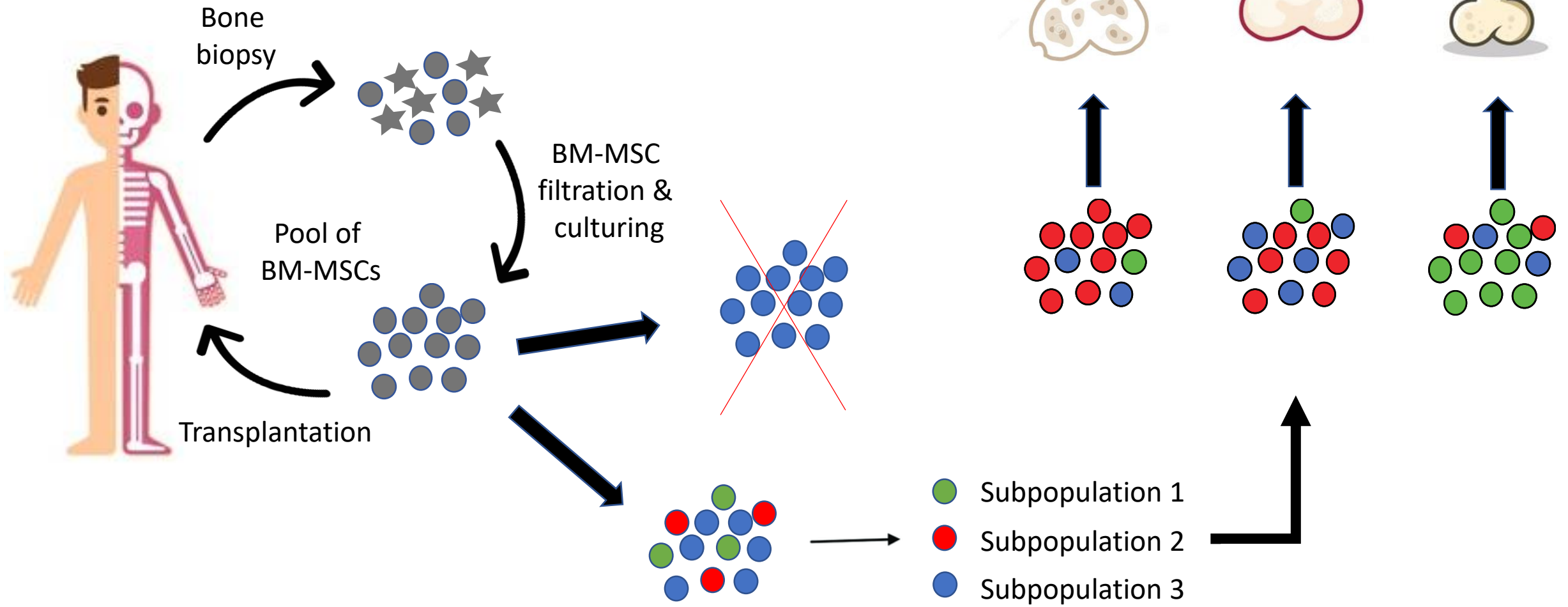
Lineage tracing - verification



Lineage tracing - verification



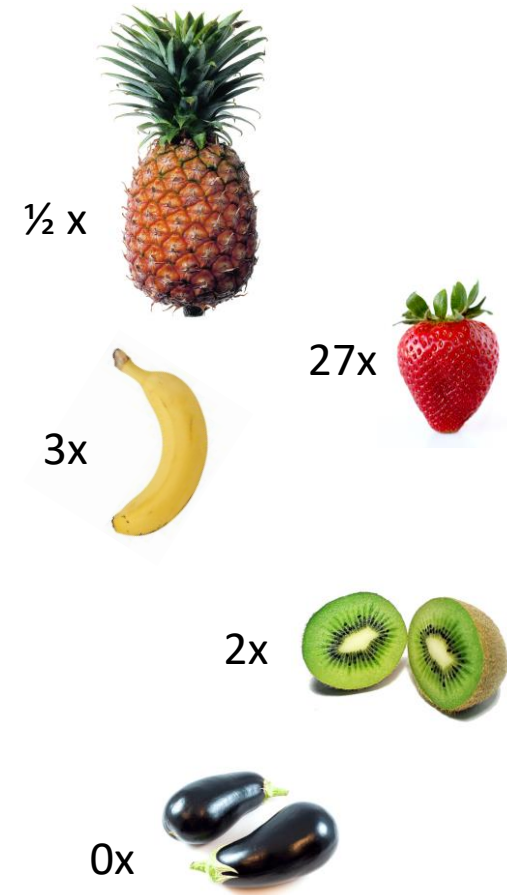
Hypothesis



scRNA-sequencing

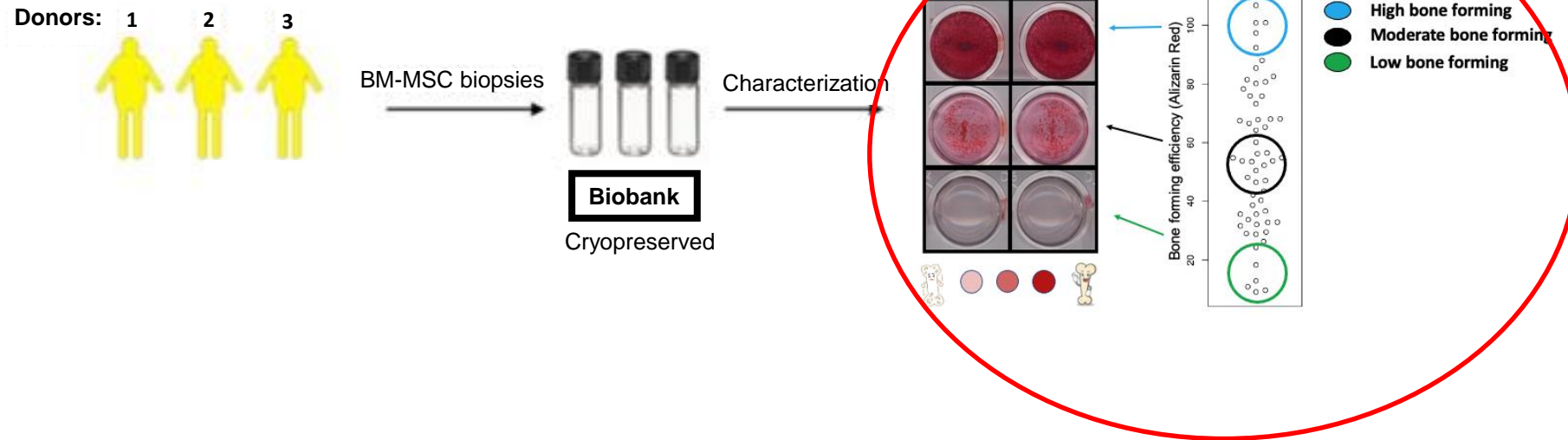


scRNA-sequencing



Study design - identification

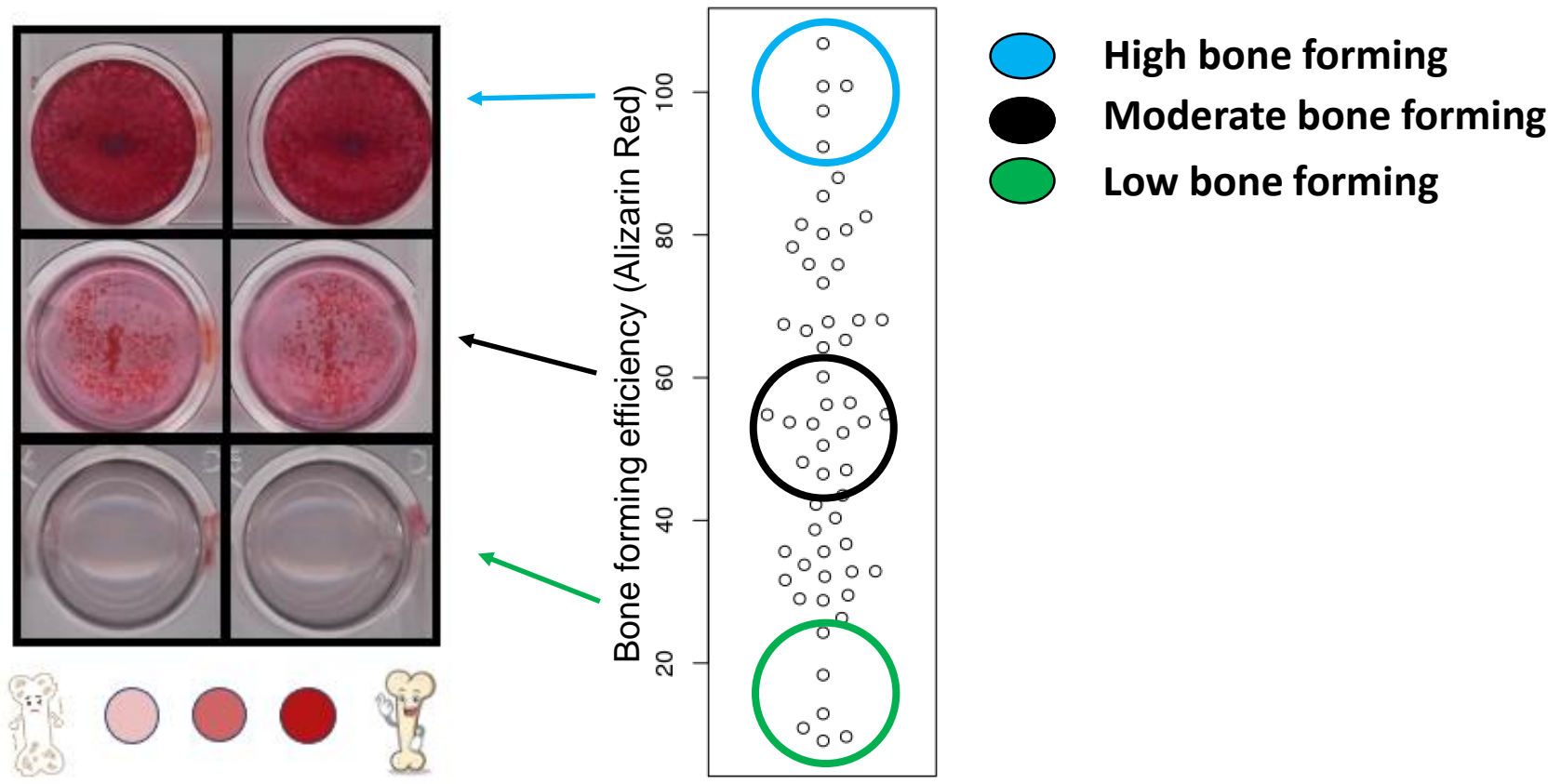
Donors with known bone forming potential



Practicalities:

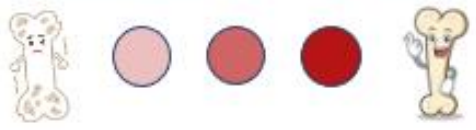
1) Sample selection

Study design - identification



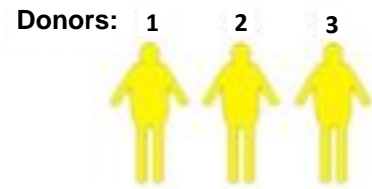
Practicalities:

1) Sample selection



Study design - identification

Donors with known bone forming potential

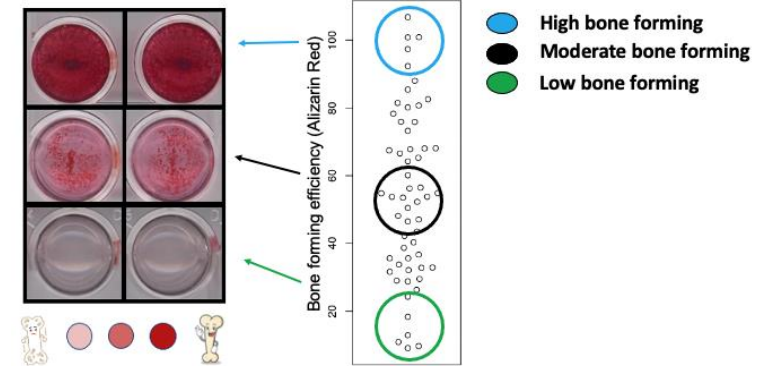


BM-MSC biopsies

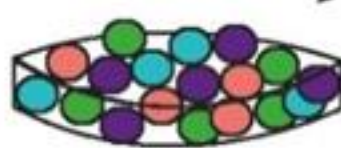


Characterization

Biobank
Cryopreserved



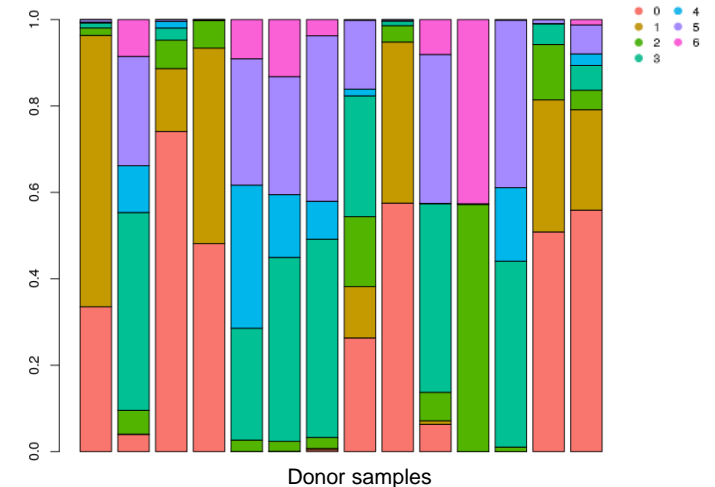
(2)



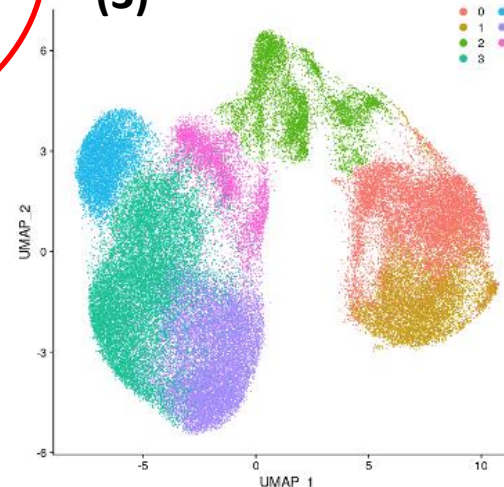
Selection of donors

scRNA-seq

(4)



(3)

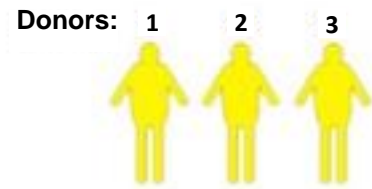


Practicalities:

- 1) Sample selection
- 2) Single cell RNA-sequencing

Study design - identification

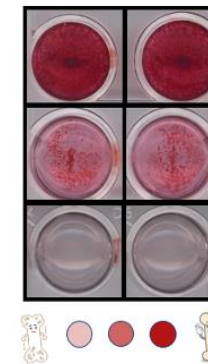
Donors with known bone forming potential



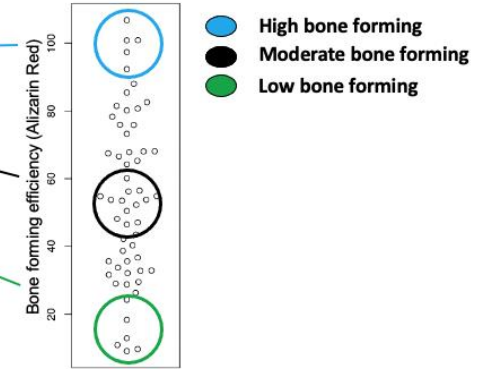
BM-MSC biopsies



Characterization



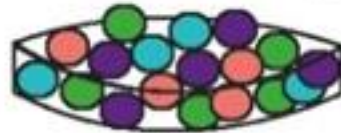
(1)



Selection of donors

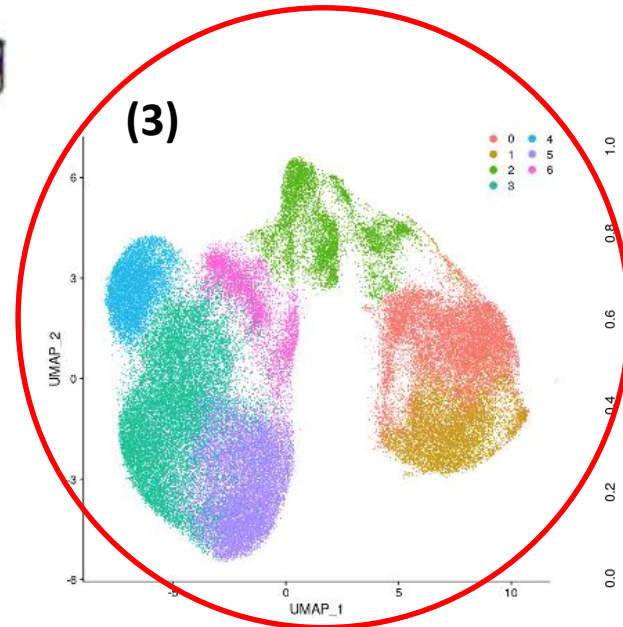
Biobank
Cryopreserved

(2)

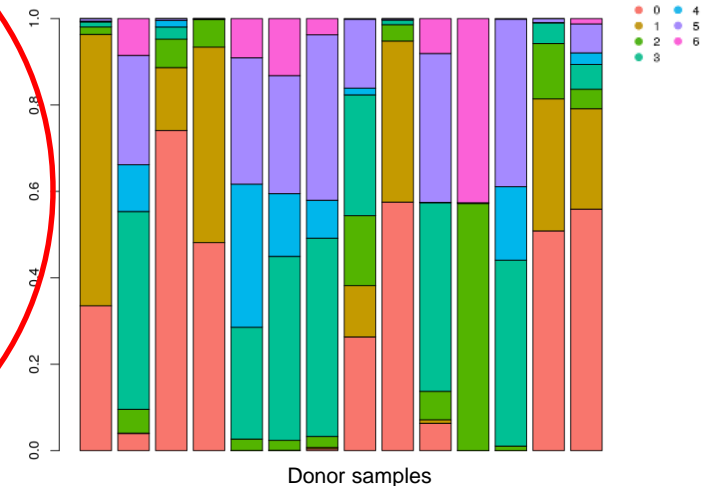


scRNA-seq

(3)



(4)

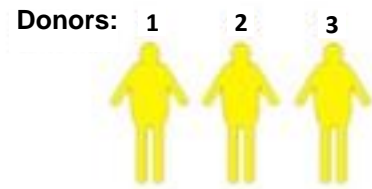


Practicalities:

- 1) Sample selection
- 2) Single cell RNA-sequencing
- 3) BM-MSC subpopulation determination

Study design - identification

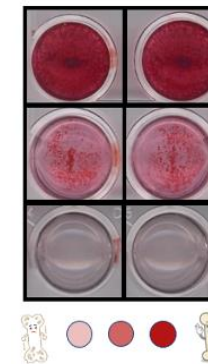
Donors with known bone forming potential



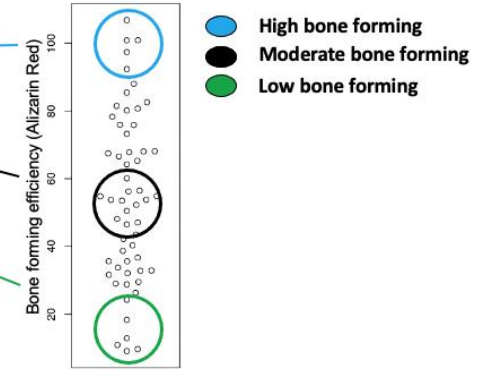
BM-MSC biopsies



Characterization

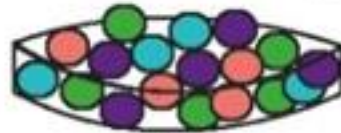


(1)



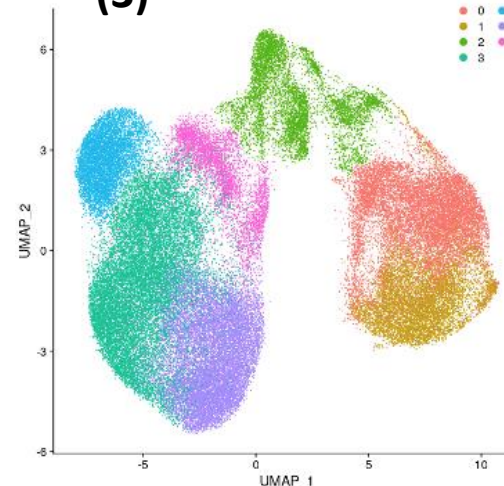
Selection of donors

(2)

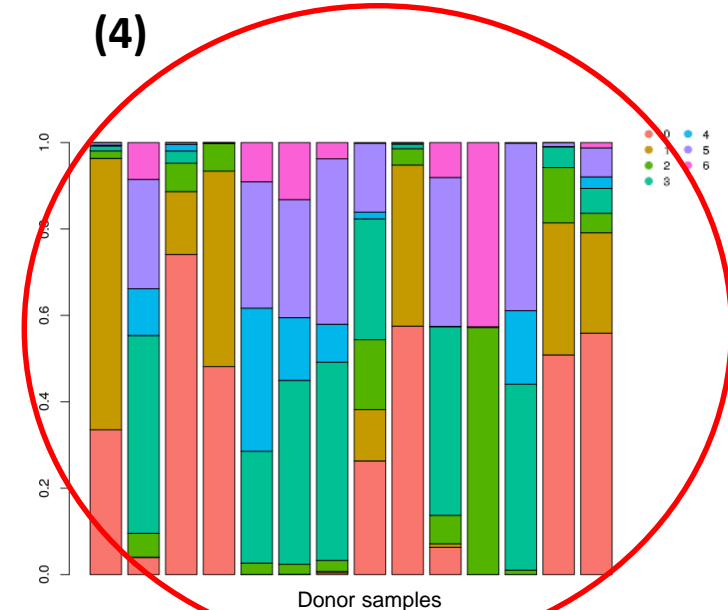


scRNA-seq

(3)



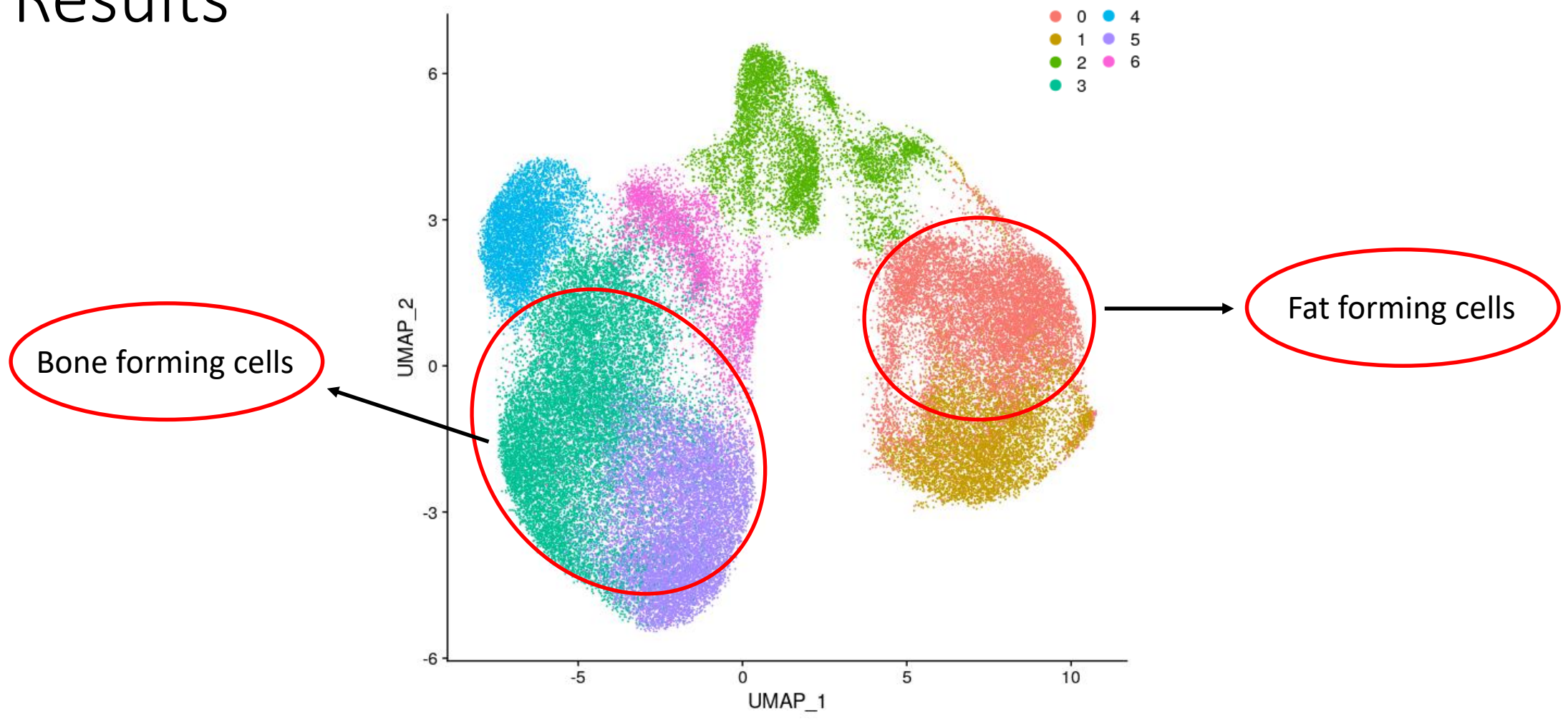
(4)



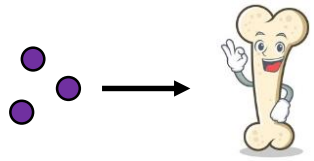
Practicalities:

- 1) Sample selection
- 2) Single cell RNA-sequencing
- 3) BM-MSC subpopulation determination
- 4) BM-MSC subpopulation abundancies quantification

Results



Study design - verification

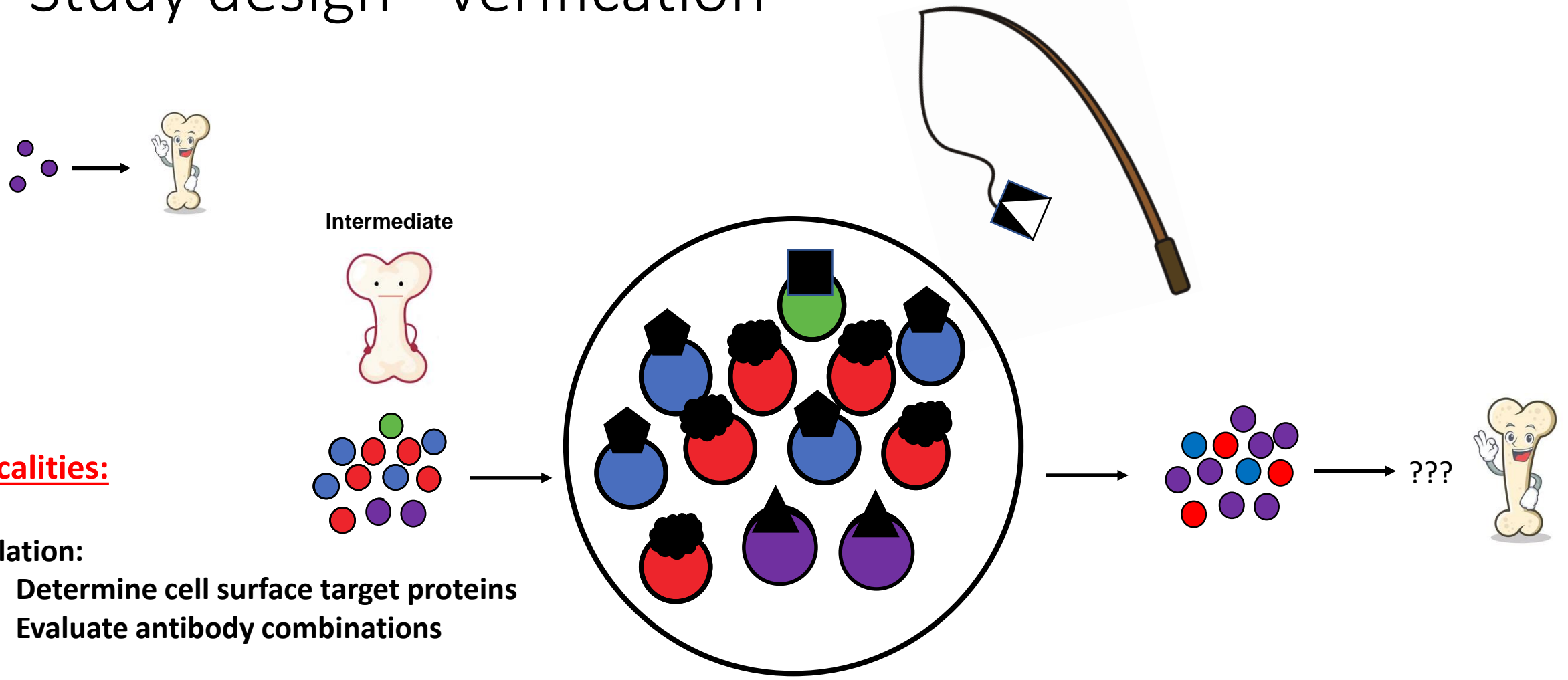


Practicalities:

1) Isolation:

- Determine cell surface target proteins
- Evaluate antibody combinations (A)

Study design - verification

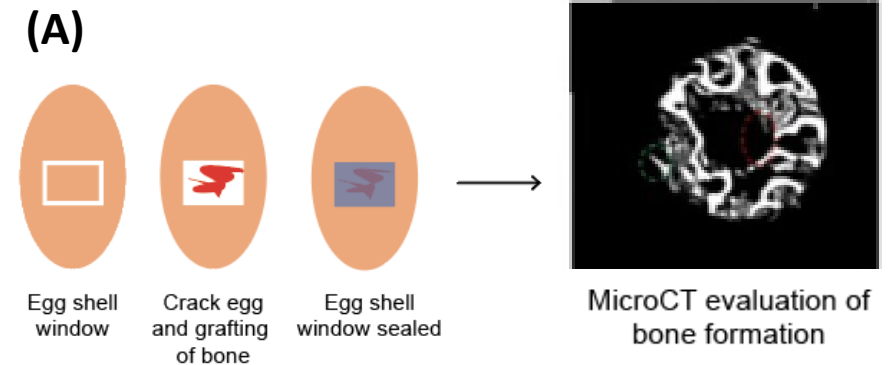


Practicalities:

1) Isolation:

- Determine cell surface target proteins
- Evaluate antibody combinations

Study design - verification



Practicalities:

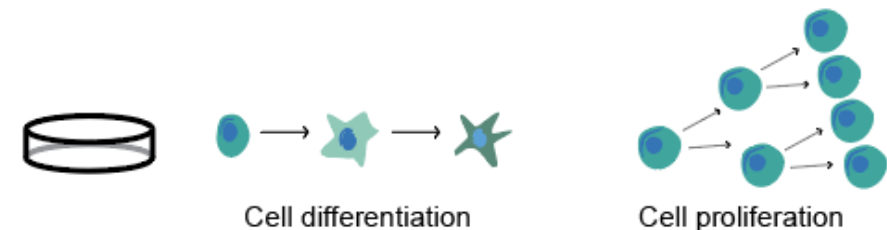
1) Isolation:

- Determine cell surface target proteins
- Evaluate antibody combinations

2) Intrinsic osteogenic potential determination:

- *In vivo* differentiation (A)
- *In vitro* differentiation (B)

(B)



Functional analysis in vivo and in vitro

Thank you to our sponsors!

All sponsors:



Danmarks 3R-Center



Region of 
Southern Denmark

OUH
Odense
University Hospital

Favorite sponsors:

Danmarks 3R-Center

